

Foreign Citizens in Rome

(Extract from "I numeri di Roma" No.1 – January/February 2004)

Enrico D'Elia and Rossana Rosati
Statistical Office of the City of Rome

(Rendered from the Italian by Frank Heins, Irpps-Cnr)

Abstract

According to the most recent data referring to the end of 2003, the foreign citizens registered in the population register (*anagrafe*) of the city of Rome are more than 200,000, what amounts to an incidence of 72 foreign citizens per thousand inhabitants. Of the foreign citizens living at December 31st in the city of Rome about 173,000 (equal to 86 % of the total) come from countries outside of the European Union. Not always the registration in the *anagrafe* corresponds to reality: on one hand irregular situations persist with foreigners not registered; on the other hand foreign citizens frequently are changing their residence and leaving Rome/Italy without any communication to the municipal offices. For these reasons, one can suppose that the number of foreign citizens is, on the whole, lower than indicated by the population register. In any case, in the last five years the number of foreign citizens increased by about 67,000 persons, an increase of 50 % between 1997 and 2003. A further increase will take place, probably, as a result of the regularisations of the 107,000 demands for permits of residence presented last year for the entire province in the prefecture of Rome. However, one has to take into account that many regularisations are applied for by foreign citizens already registered with the *anagrafe*, but with their permits of residence expired. Only a, probably small, fraction of the 107,000 applicants will have to be added to the foreign citizens already in the population register.

In general, a distinction between the zones of Rome where earlier and more recent migration flows settle can be observed, linked to a change in the countries of origin of these flows. Even if the central and northern boroughs of Rome record a higher incidence of foreign citizens in the total population, the major increase of the last five years occurred in the eastern and southeastern zones of the city. For many years the most numerous nationality immigrating in Rome were the Philippines with more than 26,000 people and characterised by an important presence of women. However, starting in 2000 the Romanians took over the first position among immigrants and are today the second most numerous nationalities among the foreign citizens registered in the *anagrafe*. Meanwhile the signs that the foreign communities are putting root are multiplying. For example, the number of married persons among foreigners is increasing, due to the reunification of family nuclei and an over proportional increase in the number of women and of younger foreigners under 15 years old. These changes are typical of the 'second' phase of immigration. This

population of foreign origin has an important potential regarding a demographic return with a balanced gender structure and a high incidence of population in the age of economic activity and procreation.

At the end of 2003 the campaign regarding the registering for voting in the elections of the adjunct city council members representing the non EU-nationals closed with 33,000 foreign citizens of non-European Union member states¹ asking for registration. This confirmed the existence of a community of foreign citizens attached to the territory.

Introduction

According to the data from the population register (*anagrafe*) from 1997² to 2003 the number of foreign citizens in Rome increased by circa 50 % from about 134,000 to more than 200,000 persons. The incidence on the total resident population in Rome increased during six years by 2.4 percentage points. At the end of 1997 the incidence of the foreign citizens on the total population of Rome was 4.8 %, in December 2003 the incidence reached 7.2 %, with a rising female component.

The data source employed in this research is the *anagrafe* or population register of the resident population in Rome, regarding flow data like changes of residence, arrivals and departures, and regarding the data on stock at the end of the year with information on the resident population registered December 31st. The population register is the best data source to provide up-to-date information regarding foreign citizens, even if the statistical observation of this phenomenon is not easy. A foreigner must have obtained his permit of residence in order to be able to register in the *anagrafe* of a municipality. On the other hand, once a foreign citizen decides to leave the country he might 'forget' to inform the administration and the population register is not up-dated.

The general population census conducted October 20, 2001, which provides more detailed information regarding the foreign population residing in Italy, can only provide data already obsolete³ in certain regards because the phenomenon of immigration is in constant transformation.

A further source⁴ of information regarding foreign citizens is the prefecture of the province of Rome, which collected the demands for the regularisation of foreign citizens without permits of residence during the sanatoria made possible through the legislation called '*Bossi/Fini*'. For the entire area of the province of Rome 107,000 demands were presented.

The migration dynamic

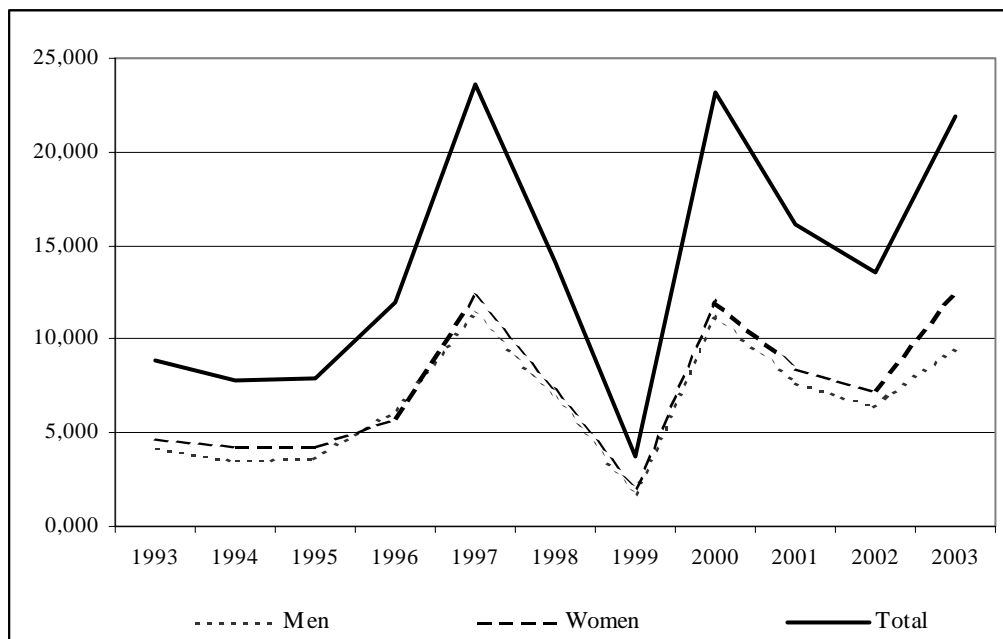
The immigration⁴ from foreign countries showed in the last ten years an increasing tendency. In the majority of cases these foreign citizens arrived in Rome to study or to work. However, the registrations from abroad include also a small number of Italian citizens who left Italy previously.

¹ Foreign citizens from EU member states have the right to participate in the municipal elections like Italian citizens.

² Starting in 1997 elaborations of the data of the population register regarding foreign citizens are available.

³ The results regarding the foreign citizens were published June 16th 2004 and are not yet available for boroughs of the municipalities.

Figure 1 Immigrants from abroad, Rome 1993-2003



Source: Population register of the City of Rome

Table 1 Immigrants from abroad by gender, Rome 1993-2003

Year		Men	Women	Total
1993	Abs	4,207	4,656	8,863
	%	47.5	52.5	100.0
1994	Abs	3,509	4,295	7,804
	%	45.0	55.0	100.0
1995	Abs	3,668	4,228	7,896
	%	46.5	53.5	100.0
1996	Abs	6,159	5,794	11,953
	%	51.5	48.5	100.0
1997	Abs	11,347	12,257	23,604
	%	48.1	51.9	100.0
1998	Abs	6,795	7,270	14,065
	%	48.3	51.7	100.0
1999	Abs	1,737	2,000	3,737
	%	46.5	53.5	100.0
2000	Abs	11,264	11,960	23,224
	%	48.5	51.5	100.0
2001	Abs	7,702	8,400	16,102
	%	47.8	52.2	100.0
2002	Abs	6,360	7,220	13,580
	%	46.8	53.2	100.0
2003	Abs	9,507	12,373	21,880
	%	43.5	56.5	100.0

Source: Population register of the City of Rome

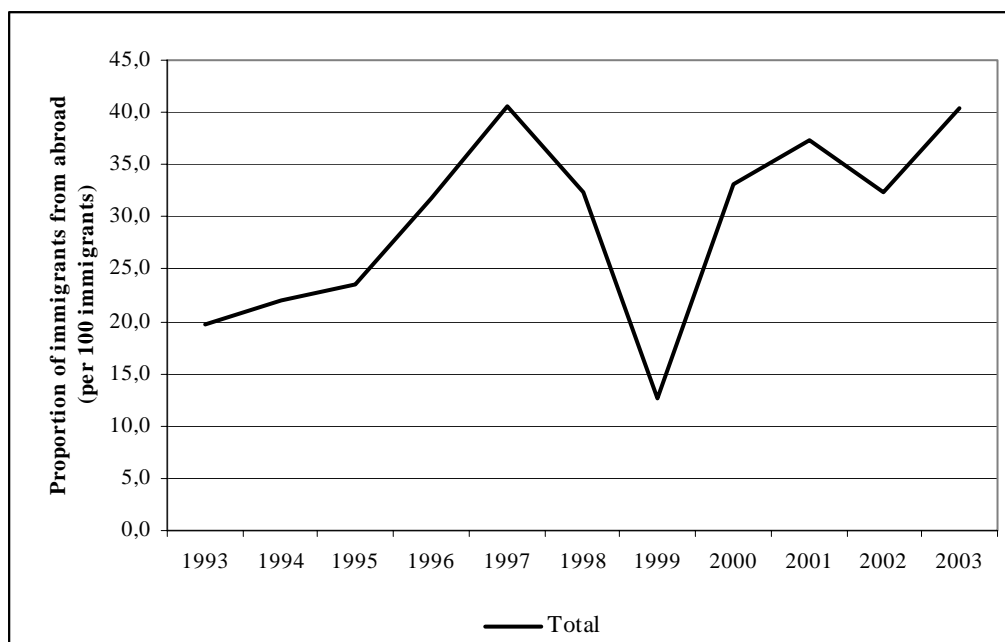
⁴ Source: Monthly demographic equation.

The fluctuations registered in the absolute values between 1993 and 2003 (Figure 1 and Table 1) with a rise in the years 1997 and 2000 and a fall in 1998 and especially in 1999 are balancing each other, confirming an overall trend towards an increasing number of immigrants from abroad. In particular, last year an increase of 7,000 in the number of immigrants from abroad could be registered.

The immigration rate (Table 2) relates these absolute numbers to the resident population. The highest values above 20.0 ‰ can be observed for the years 1997, 2000 and 2003.

Immigration from abroad is assuming an ever-increasing quantitative importance in the overall immigration of the city of Rome (Figure 2 and Table 3), shown by the ratio between immigrants from abroad and the total number of immigrants⁵.

Figure 2 Proportion of immigrants from abroad, Rome 1993-2003



Source: Population register of the City of Rome

Table 2 Immigrants and emigrants, Rome 1993-2003 (absolute and relative values)

	1993	1994	1995	1996	1997	1998	1999	2000	2001	2002	2003
Immigrants (abs)	45,057	35,288	33,620	37,735	58,153	43,596	29,722	70,268	43,083	42,084	54,132
Immigrants (per 1,000 inhabitants)	16.8	13.2	12.7	14.7	21.9	16.5	11.2	26.5	16.9	16.5	20.8
Emigrants (abs)	77,991	54,222	43,004	45,238	46,668	46,458	32,924	57,393	36,531	46,083	51,807
Emigrants (per 1,000 inhabitants)	29.0	20.3	16.2	17.1	17.6	17.6	12.5	21.6	14.3	18.1	21.1

Source: Population register of the City of Rome

⁵ The total number of immigrants includes all persons moving to the City of Rome, from abroad and from any other municipality of Italy.

Table 3 Immigrants from abroad in percent of all immigrants, Rome 1993-2003

Year	Men	Women	Total
1993	19.0	20.3	19.7
1994	20.3	23.8	22.1
1995	22.2	24.7	23.5
1996	33.0	30.4	31.7
1997	39.4	41.8	40.6
1998	32.6	31.9	32.3
1999	12.1	13.1	12.6
2000	33.2	32.9	33.1
2001	37.7	37.0	37.4
2002	32.1	32.4	32.3
2003	38.8	41.8	40.4

Source: Population register of the City of Rome

The dynamics of migration flows leading to an apparent increase in the number of foreign citizens is accompanied by an increase regarding the crude birth rate⁶. Since 1999 a crude birth rate between 9 and 10 ‰ is observed and the increase in the number of births can be regarded as a consolidated phenomenon. In the year 2003 natality reached a value of 9,9 ‰ with an increase in the number of births of 6 % compared to the precedent year. Nevertheless, since 2000 the natural population movement is negative for the city of Rome.

Migration streams usually involve persons in age groups characterised by economic activity and, in the case of women, characterised by the age of child bearing. In the case of a process of integration⁷ this process leads to a consolidation of the family structures, including fertility models with levels slightly above the average of the autochthon population.

The population stock at the end of a year according to the population register or *anagrafe* and resulting from the process of registration and cancellation due to migration, birth and death, is the base for an analysis of the contribution of the population of foreign origin to the demographic change in the boroughs (*municipi*) of Rome.

The increase in the incidence of the foreign citizens on total population (Table A1) did not exceed in the majority of the boroughs the average value observed for Rome throughout the period 1997 to 2003 (+2.4 %). The boroughs that already registered in 1997 a presence of foreign citizens above the average (the boroughs I, II, III, XVIII and XX) continue to experience a steady increase. This rise of foreign citizens was in borough I higher than 5 %. The north northwestern zone of Rome, as well as the two eastern boroughs VII and VIII, is the most interested by the phenomenon.

⁶ Births and deaths, Rome 1993-2003 (absolute and relative values)

	1993	1994	1995	1996	1997	1998	1999	2000	2001	2002	2003
Births	23,867	23,201	21,739	22,579	22,510	22,043	26,642	24,108	23,922	23,774	25,291
Births (per 1,000 inhabitants)	8.9	8.7	8.2	8.5	8.5	8.3	10.0	9.1	9.4	9.4	9.9
Deaths	26,379	25,096	25,220	23,941	26,072	26,165	26,120	24,594	24,206	24,806	26,442
Deaths (per 1,000 inhabitants)	9.8	9.4	9.5	9.1	9.8	9.9	9.3	9.5	9.5	9.8	10.6

Source: Population register of the City of Rome

⁷ Integration here is understood simply as a stay of longer duration.

The geographic distribution of the more than 56,000 foreign citizens, who between 1997 and 2003 took up their usual residence in Rome, indicates a clear direction towards the eastern and southeastern sectors of the city. In particular the borough VIII registers a doubling of the number of foreign citizens reaching a total of 10,000 persons of foreign origin, and in the VIIth *municipio* the increase in the number of foreign citizens is about 75 %.

It is interesting to note that with the exception of the Ist and XVIth *municipio* all boroughs, which experienced an increase in the number of foreign citizens, this increase is generally higher for the female compared to the male component. This increasing female component of the migration dynamics of foreign citizens contributed certainly to the overall increase of the married persons among the foreigners (Table A7). It can be hypothesised that family nuclei reunified after some years of separation, when only one component of the household lived in Rome. Also the gender structure of the foreign population in the city of Rome (Figure A1) changed accordingly.

The structure of the foreign population

The population structure, which determines the changes in the population and which, on its turn, is the result of its dynamics, is a further argument treated here.

When looking at the population structure, the feminalisation and rejuvenation of the foreign population of the city of Rome are the two most significant elements that distinguish the foreign from the Italian population. The Italian population, which carries the aspects of a demographically declining population with its decrease of younger age groups and its considerable increase of older age groups, is 'opposed' to a population who's structure represents a strong potential for demographic change and renewal:

- A relevant presence of persons in economically active age.
- A relevant presence of women in age of procreation.
- A relative balanced sex ratio in the young and adult ages.
- Increasingly young population with an increase in the age group 15 to 19 through the process of immigration and the age group 0 to 4 through births.
- A low incidence of the elderly.

The structural indices (Table A8 and Figure A2) summarise the above-mentioned processes most efficiently. A ratio of about 60 elderly to 100 young in the foreign population compares to a ratio of about 161 elderly to 100 young in the case of the Italian population. Interesting to note that the VIIIth borough, the youngest among the 19 boroughs of the city of Rome⁸, registers the lowest value of the indices of ageing not only for the Italian population, but also for the foreign one. The important increase in the registration of foreigners in this borough (between 1997 and 2003 the number of immigrants from abroad increased by 127

⁸ The XIVth borough became independent in 1991 to form the municipality of Fiumicino.

%) that is characterised by a strong female component indicates a relative high propensity of young families in the age of procreation to settle in this part of the city.

In the case of the Italian population the index of economic dependence expresses an almost perfect balance between the persons in the economically dependent age classes (under the age of 15 and 65 years and older) and the economically active age groups (aged 15 to 64) with a value of 50 per cent. This value is about the double of the value observed for the foreign population of 25.8 per cent.

The boroughs with a high share of youngsters under the age of 15 in the total population are, with the exception of the VIth *municipio*, those boroughs that registered an over proportional increase in the number of foreign citizens between 1997 and 2003 and that have a high proportion of foreign citizens in the economically active age and the age of procreation.

The year 2003 brought a further increase in the ratio of foreign to Italian citizens in the boroughs of the city of Rome, which traditionally had already a high concentration of foreign citizens. These are, as already pointed out earlier, the central, northern and northwestern zones of the city. Considering the value observed for the *municipio* I – about 23 foreign citizens per 100 Italian ones – this is the zone of the city of Rome affected traditionally by international migration flows. In this borough can be found many embassies, offices of ethnic associations and the majority of voluntary organisations dealing with immigrants, as the Caritas and the *Comunità di Sant'Egidio*, who offer among many other services also residence to the foreigners the most deprived and needy.

Also census data are underlining this finding with a proportion of foreign citizens in the 1st borough above 11.0 %, an average household size of 2.60 persons in the case of households with at least one foreign citizen present and an average household size of 2.65 persons in the foreign households.

Foreigners and the duration of residence in the city of Rome

At the end of 2003 86.0 % of the foreign citizens in Rome had a citizenship of a non-EU country (Table A9). The proportion of non-EU nationals among the foreign citizens is highest in the boroughs that registered the highest immigration flows in recent years, whereas the proportion of EU⁹ nationals among foreign citizens is above average in the historical centre of Rome and the northern boroughs. Over time the zones of attraction of the migration flows probably changed according to the socio-economic situation and background of the immigrants, here measured through the country of origin and the criteria of EU/non-EU citizenship as an approximation.

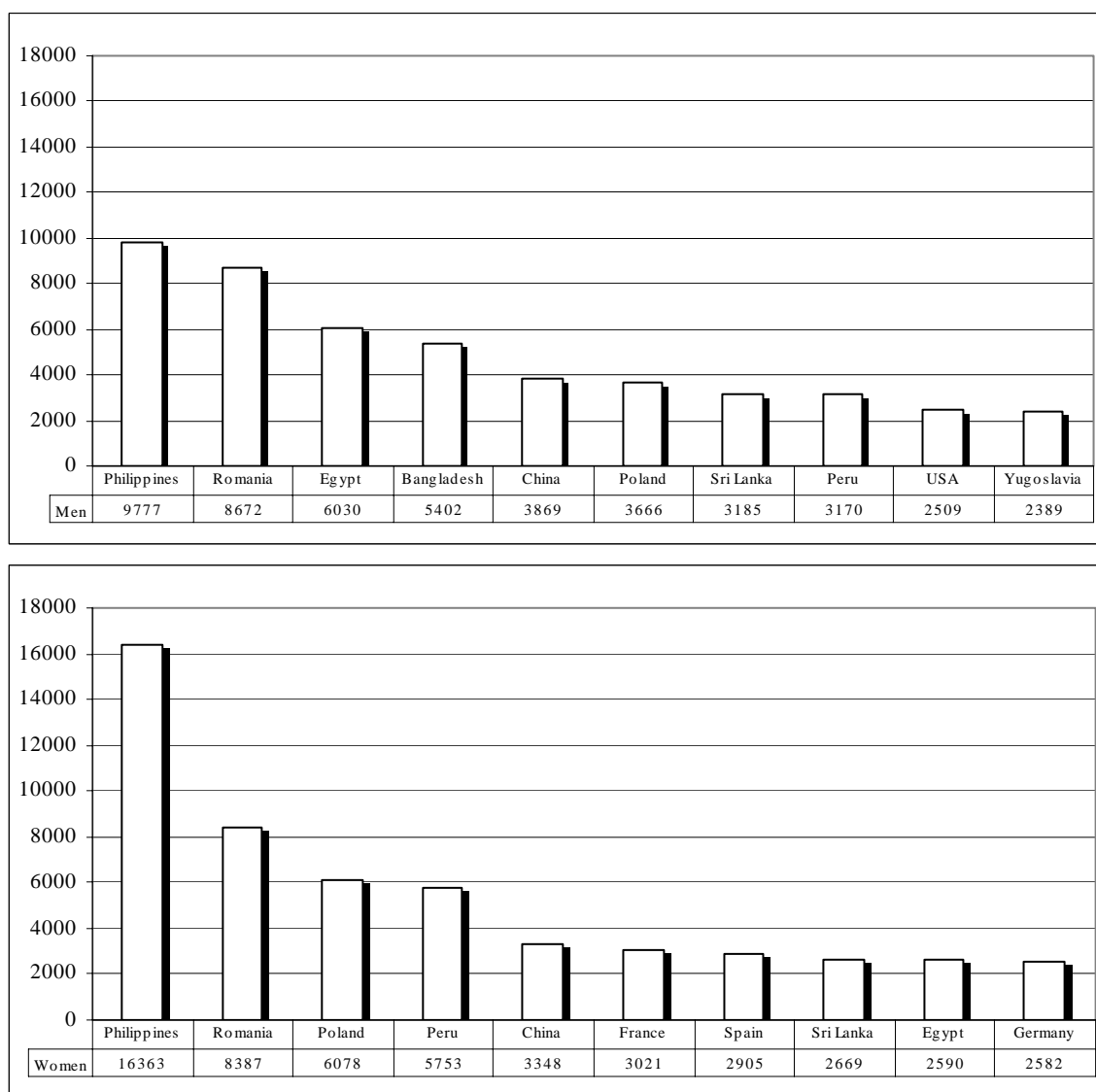
Philippines nationals the most numerous nationality among foreign citizens in Rome with more than 26,000 persons play a major role in all boroughs (Figure 3). The gender imbalance with 16,000 women and 9,800 men in this nationality is noteworthy. Romanians, who are the second most numerous nationalities among the foreign citizens in Rome, have a more or less balanced sex ratio. This ratio is very imbalanced in favour of men in the case of Egyptians and Bangladeshi. It is also worth mentioning that US citizens are

⁹ In this case EU refers to the European Union of 15 countries before enlargement in may 2004.

among the 10 most numerous nationalities in the case of men, but not in the case of women. Whereas three nationalities, French, Spanish and German, are only present among the classification of women of the ten most numerous nationalities.

Philippine nationals are the most numerous communities in the Ist, IInd, XIXth and XXth borough, which are areas with a traditionally higher socio-economic status. Therefore the presence of many EU-nationals in the *municipio* I and II is not surprising.

Figure 3 The 10 most numerous communities of foreign citizens in Rome by gender, end of 2003



Source: Population register

Analysing the statistical information available regarding the duration of residence in Rome of the foreign citizens at the end of 2003 (Table A10) it becomes evident that somewhat less than half of the foreign residents are in Rome since the nineties. The number of immigrants increased in recent years (first

registrations in the *anagrafe* during the period 2000 to 2003) and the female component becomes more prominent.

This tendency is probably confirmed by the 107,000 demands for regularisation presented at the prefecture of the province of Rome. 67,000 of these demands alone are linked to an employment in the domestic service sector. Even if these data refer to the province of Rome, it can be hypothesised that a considerable share of these demands originates in the city of Rome.

A further series of tables (Tables A11 to A15) refers to the decomposition of the immigrant flows of the last five years according to their nationality focusing on the first twenty communities. Apart from purely quantitative aspects it is noteworthy that since the year 2000 the Philippine nationals lost their first position to the Romanians, who are today the second most numerous nationality in the city of Rome. During the period of observation Ecuadorians gained third position among the immigrants in 2003 followed by Ukrainians, who were not present in the classification in 1999, in fourth position.

Political and civil participation of foreign citizens

The election of the adjunct city council members to represent non-European Union (15) immigrants offers the occasion to evaluate the degree of integration and their civil and political involvement. All non-EU nationals residing or working or studying in Rome could register for voting. These voter lists refer to the end of 2003 and the election took place March 28th 2004. To register for the vote a registration with the *anagrafe* of the city of Rome was not required. Consequently, the potential electorate was larger than the foreign citizens from non-EU nations in the age of majority. At the end of 2003 33,000 non-EU nationals were registered for the voting representing 22.4 % of those who would have theoretically the right if the voter list were restricted to the residents of Rome. This is a considerable number of foreign citizens if the particular nature of this election is considered (the election of adjunct city council members without the right to vote), the difficulty to communicate with such a great variety of ethnicities and nationalities; the low involvement everywhere where a registration to vote is necessary. For the purpose of comparison the voting of Italians abroad in two occasions can be considered, whereas the last referendum did not reach the 25 % of those having potentially the right to vote, in the last European elections (1999) voting remained below 30 % in the UK and the Netherlands and did not reach 50 % in France and Germany.

The non-EU nationals show a rate of registration in the voter lists somewhat higher for men (25.3%) compared to women (19.8%). This is an encouraging and unexpected sign of the degree of civil conscience and integration reached by immigrated women. However, the registration in the voter lists is considerably higher for men compared to women in the case of Bangladeshi, Indians, Ukrainians and Senegalese.

The numerosity of nationalities registered in the voter lists varies significantly from the one of the *anagrafe*. The Philippine nationals confirm their significant presence in the city of Rome, whereas the Romanians, which present the second most numerous nationalities, reach only the seventh position on the voters list. The Romanians are surpassed by the Bangladeshis, probably with many nationals present in

Rome without being registered with the *anagrafe* a fact indicated by the, fictitious, rate of registration in the voter list above 100%, Sri Lankese, Chinese, Peruvians and Indians.

In general the foreign citizens from Southeast Asia were very interested in the election of the adjunct city council members with a registration in the voter lists above 40 %. To the contrary Polish, Romanian and north African citizens showed a degree of "political integration" below average, perhaps simply due to a higher geographic mobility due to temporary labour in agriculture and construction.

Appendix

Table A1 Foreign citizens and their incidence on the total population by borough and gender, 1997 – 2003

Boroughs <i>Municipi</i>	Foreign citizens, total							Variation (in %)	
	1997	1998	1999	2000	2001	2002	2003	1997–2003	
I	abs	16,650	17,637	18,388	19,942	21,087	21,800	22,706	36.4
	%	13.6	14.4	15.0	16.2	17.2	17.9	18.6	
II	abs	9,542	10,237	10,441	11,361	12,008	12,291	13,185	38.2
	%	7.6	8.2	8.4	9.1	9.6	9.9	10.6	
III	abs	3,716	3,792	3,782	4,146	4,279	4,431	4,587	23.4
	%	6.4	6.6	6.6	7.3	7.5	7.9	8.2	
IV	abs	5,723	6,140	6,273	7,037	7,544	7,929	8,796	53.7
	%	2.7	3.0	3.1	3.4	3.7	3.9	4.3	
V	abs	4,627	5,040	5,230	5,967	6,380	6,713	7,458	61.2
	%	2.5	2.7	2.8	3.2	3.4	3.6	4.0	
VI	abs	7,303	7,673	7,876	8,707	9,217	9,629	10,345	41.7
	%	5.4	5.7	5.9	6.6	7.0	7.4	8.0	
VII	abs	4,330	4,858	5,291	6,344	6,916	7,388	8,036	85.6
	%	3.4	3.8	4.2	5.0	5.5	5.9	6.4	
VIII	abs	5,254	5,803	6,294	7,933	9,414	10,287	11,927	127.0
	%	2.7	3.0	3.2	4.0	4.7	5.1	5.9	
IX	abs	5,298	5,828	6,007	6,848	7,318	7,516	7,955	50.2
	%	3.9	4.3	4.5	5.1	5.5	5.7	6.1	
X	abs	3,925	4,300	4,486	5,188	5,666	5,781	6,165	57.1
	%	2.2	2.4	2.5	2.9	3.1	3.2	3.4	
XI	abs	5,555	6,183	6,368	7,401	7,939	8,200	8,817	58.7
	%	3.9	4.4	4.6	5.3	5.7	5.9	6.4	
XII	abs	4,784	5,168	5,339	6,152	6,777	7,052	7,916	65.5
	%	3.1	3.3	3.4	3.8	4.2	4.3	4.7	
XIII	abs	7,900	8,361	8,587	9,842	10,285	10,687	12,024	52.2
	%	4.2	4.5	4.5	5.1	5.3	5.4	6.0	
XV	abs	5,868	6,599	7,003	8,143	8,840	9,257	10,119	72.4
	%	3.7	4.2	4.5	5.2	5.7	6.0	6.6	
XVI	abs	7,030	7,646	7,753	8,209	8,658	8,852	9,659	37.4
	%	4.7	5.1	5.2	5.6	5.9	6.1	6.7	
XVII	abs	4,089	4,459	4,696	5,187	5,419	5,514	5,824	42.4
	%	5.4	5.9	6.2	6.9	7.2	7.4	7.9	
XVIII	abs	8,531	9,160	9,545	10,553	11,222	11,589	12,394	45.3
	%	6.4	6.8	7.1	7.8	8.3	8.6	9.2	
IXX	abs	7,471	8,277	8,580	9,435	10,005	10,530	11,427	53.0
	%	4.2	4.6	4.8	5.3	5.6	5.9	6.3	
XX	abs	12,647	13,650	13,915	15,476	16,441	16,852	18,488	46.2
	%	8.7	9.4	9.6	10.6	11.2	11.5	12.5	
Unknown	abs	3,912	4,478	5,367	5,193	4,818	4,183	3,805	-2.7
	%	26.0	30.0	28.2	31.9	35.2	37.0	38.7	
Rome	abs	134,155	145,289	151,221	169,064	180,233	186,481	201,633	50.3
	%	4.8	5.2	5.4	6.0	6.4	6.7	7.2	

Table A1 Foreign citizens and their incidence on the total population by borough and gender, 1997 – 2003
(continue)

Boroughs <i>Municipi</i>		Foreign citizens, men							Variation (in %)
		1997	1998	1999	2000	2001	2002	2003	1997–2003
I	abs	9,205	9,683	10,201	11,043	11,795	12,164	12,639	37.3
	%	15.5	16.1	17.1	18.3	19.5	20.2	21.1	
II	abs	3,798	3,998	4,092	4,425	4,649	4,770	5,028	32.4
	%	6.8	7.2	7.4	8.0	8.4	8.7	9.2	
III	abs	1,700	1,697	1,691	1,837	1,886	1,954	1,993	17.2
	%	6.4	6.5	6.5	7.1	7.3	7.7	7.8	
IV	abs	2,647	2,816	2,878	3,194	3,400	3,538	3,820	44.3
	%	2.7	2.9	2.9	3.3	3.5	3.7	4.0	
V	abs	2,464	2,665	2,738	3,098	3,259	3,373	3,643	47.8
	%	2.7	2.9	3.0	3.4	3.6	3.8	4.1	
VI	abs	4,529	4,628	4,661	5,008	5,179	5,317	5,559	22.7
	%	6.8	7.1	7.2	7.8	8.2	8.5	9.0	
VII	abs	2,337	2,586	2,801	3,343	3,607	3,827	4,126	76.6
	%	3.8	4.2	4.6	5.4	5.9	6.3	6.8	
VIII	abs	2,899	3,110	3,354	4,249	4,994	5,407	6,231	114.9
	%	3.0	3.2	3.5	4.3	5.1	5.5	6.2	
IX	abs	2,303	2,508	2,588	2,964	3,156	3,211	3,345	45.2
	%	3.7	4.1	4.2	4.9	5.2	5.4	5.6	
X	abs	2,059	2,197	2,257	2,579	2,774	2,737	2,866	39.2
	%	2.3	2.5	2.6	2.9	3.2	3.2	3.3	
XI	abs	2,813	3,074	3,164	3,642	3,885	3,995	4,211	49.7
	%	4.2	4.7	4.8	5.5	5.9	6.1	6.5	
XII	abs	2,278	2,398	2,465	2,813	3,065	3,155	3,485	53.0
	%	3.0	3.2	3.2	3.6	3.9	4.0	4.3	
XIII	abs	4,236	4,451	4,564	5,177	5,330	5,457	6,035	42.5
	%	4.6	4.8	4.9	5.5	5.6	5.7	6.2	
XV	abs	3,144	3,477	3,657	4,264	4,544	4,685	5,067	61.2
	%	4.1	4.6	4.9	5.7	6.1	6.3	6.9	
XVI	abs	2,941	3,170	3,217	3,408	3,633	3,750	4,048	37.6
	%	4.2	4.6	4.7	5.0	5.4	5.6	6.1	
XVII	abs	1,756	1,875	1,978	2,165	2,266	2,312	2,398	36.6
	%	5.1	5.5	5.8	6.3	6.7	6.9	7.2	
XVIII	abs	4,279	4,512	4,654	5,138	5,375	5,502	5,882	37.5
	%	6.7	7.1	7.3	8.0	8.4	8.6	9.2	
IXX	abs	3,259	3,569	3,733	4,152	4,400	4,596	4,940	51.6
	%	3.8	4.2	4.4	4.9	5.2	5.5	5.8	
XX	abs	5,562	5,919	6,120	6,823	7,211	7,413	8,099	45.6
	%	8.1	8.6	8.9	9.8	10.4	10.7	11.6	
Unknown	abs	2,186	2,470	2,958	2,847	2,641	2,287	2,072	-5.2
	%	24.2	27.8	27.0	30.7	34.0	36.2	37.7	
Rome	abs	66,395	70,803	73,771	82,169	87,049	89,450	95,487	43.8
	%	4.9	5.3	5.5	6.1	6.5	6.7	7.2	

Table A1 Foreign citizens and their incidence on the total population by borough and gender, 1997 – 2003
(continue)

Boroughs <i>Municipi</i>		Foreign citizens, women						Variation (in %)	
		1997	1998	1999	2000	2001	2002	2003	1997–2003
I	abs	7,445	7,954	8,187	8,899	9,292	9,636	10,067	35.2
	%	11.8	12.6	13.1	14.2	14.9	15.6	16.3	
II	abs	5,744	6,239	6,349	6,936	7,359	7,521	8,157	42.0
	%	8.3	9.0	9.2	10.0	10.6	10.9	11.8	
III	abs	2,016	2,095	2,091	2,309	2,393	2,477	2,594	28.7
	%	6.4	6.7	6.7	7.4	7.7	8.1	8.4	
IV	abs	3,076	3,324	3,395	3,843	4,144	4,391	4,976	61.8
	%	2.8	3.1	3.1	3.6	3.9	4.1	4.6	
V	abs	2,163	2,375	2,492	2,869	3,121	3,340	3,815	76.4
	%	2.2	2.5	2.6	3.0	3.3	3.5	4.0	
VI	abs	2,774	3,045	3,215	3,699	4,038	4,312	4,786	72.5
	%	4.0	4.4	4.7	5.4	5.9	6.4	7.1	
VII	abs	1,993	2,272	2,490	3,001	3,309	3,561	3,910	96.2
	%	3.1	3.5	3.8	4.6	5.1	5.5	6.0	
VIII	abs	2,355	2,693	2,940	3,684	4,420	4,880	5,696	141.9
	%	2.4	2.8	3.0	3.7	4.4	4.8	5.6	
IX	abs	2,995	3,320	3,419	3,884	4,162	4,305	4,610	53.9
	%	4.0	4.5	4.7	5.3	5.7	6.0	6.4	
X	abs	1,866	2,103	2,229	2,609	2,892	3,044	3,299	76.8
	%	2.0	2.2	2.4	2.8	3.1	3.2	3.5	
XI	abs	2,742	3,109	3,204	3,759	4,054	4,205	4,606	68.0
	%	3.7	4.2	4.3	5.1	5.5	5.7	6.2	
XII	abs	2,506	2,770	2,874	3,339	3,712	3,897	4,431	76.8
	%	3.2	3.5	3.6	4.1	4.4	4.6	5.2	
XIII	abs	3,664	3,910	4,023	4,665	4,955	5,230	5,989	63.5
	%	3.9	4.1	4.2	4.7	5.0	5.2	5.8	
XV	abs	2,724	3,122	3,346	3,879	4,296	4,572	5,052	85.5
	%	3.4	3.9	4.2	4.8	5.4	5.7	6.3	
XVI	abs	4,089	4,476	4,536	4,801	5,025	5,102	5,611	37.2
	%	5.1	5.6	5.7	6.0	6.3	6.5	7.2	
XVII	abs	2,333	2,584	2,718	3,022	3,153	3,202	3,426	46.8
	%	5.6	6.2	6.6	7.3	7.6	7.8	8.4	
XVIII	abs	4,252	4,648	4,891	5,415	5,847	6,087	6,512	53.2
	%	6.1	6.6	7.0	7.6	8.2	8.6	9.1	
IXX	abs	4,212	4,708	4,847	5,283	5,605	5,934	6,487	54.0
	%	4.5	5.0	5.1	5.6	5.9	6.3	6.8	
XX	abs	7,085	7,731	7,795	8,653	9,230	9,439	10,389	46.6
	%	9.4	10.1	10.3	11.2	11.9	12.2	13.3	
Unknown	abs	1,726	2,008	2,409	2,346	2,177	1,896	1,733	0.4
	%	28.7	33.3	30.0	33.3	36.8	37.9	40.0	
Rome	abs	67,760	74,486	77,450	86,895	93,184	97,031	106,146	56.6
	%	4.6	5.1	5.3	5.9	6.3	6.6	7.2	

Source: Population register, City of Rome

Table A2 Foreign citizens by age group, borough and gender, dicembre 31st 2003 (absolute values)

Boroughs <i>Municipi</i>	Foreign citizens by age group, total									
	0-4	5-9	10-14	15-19	20-24	25-29	30-34	35-39	40-44	45-49
I	602	535	456	450	792	1,786	2,562	2,832	2,568	2,127
II	499	390	332	298	413	831	1,429	1,722	1,553	1,413
III	143	112	136	106	166	307	492	584	535	515
IV	372	329	374	314	423	798	1,071	1,208	1,080	926
V	416	347	291	275	427	785	1,093	1,140	843	724
VI	817	603	473	367	535	996	1,513	1,588	1,326	934
VII	701	505	398	301	346	863	1,259	1,286	926	656
VIII	1,114	640	621	526	721	1,437	1,982	1,815	1,247	879
IX	438	329	278	235	346	731	1,172	1,203	1,029	747
X	436	295	250	196	324	732	982	1,008	712	458
XI	479	377	330	264	413	855	1,148	1,292	1,067	798
XII	351	303	296	241	392	717	1,055	1,193	926	699
XIII	587	465	436	391	527	1,180	1,697	1,758	1,587	1,233
XV	780	579	396	352	519	1,034	1,591	1,630	1,242	755
XVI	394	309	276	233	391	883	1,215	1,435	1,200	955
XVII	180	156	117	149	194	461	775	855	708	563
XVIII	529	420	366	316	447	1,006	1,598	1,739	1,514	1,088
IXX	724	534	472	400	506	1,029	1,529	1,636	1,357	1,082
XX	932	776	777	632	825	1,520	2,399	2,471	2,212	1,896
Unknown	72	110	122	106	149	208	348	492	467	421
Rome	10,566	8,114	7,197	6,152	8,856	18,159	26,910	28,887	24,099	18,869

Boroughs <i>Municipi</i>	Foreign citizens by age group, total								
	50-54	55-59	60-64	65-69	70-74	75-79	80-84	85 +	Total
I	1,761	1,562	1,298	1,008	701	497	381	788	22,706
II	1,078	801	632	465	337	274	207	511	13,185
III	390	296	201	168	98	93	59	186	4,587
IV	581	419	294	195	139	90	74	109	8,796
V	511	262	133	77	50	34	18	32	7,458
VI	513	272	132	114	74	32	24	32	10,345
VII	365	166	86	78	40	26	16	18	8,036
VIII	460	215	86	79	58	19	16	12	11,927
IX	512	283	196	142	99	73	50	92	7,955
X	277	169	91	80	43	40	21	51	6,165
XI	589	363	256	203	151	92	52	88	8,817
XII	513	336	271	186	147	108	91	91	7,916
XIII	771	517	277	190	154	89	76	89	12,024
XV	492	264	143	109	90	55	32	56	10,119
XVI	683	495	331	282	178	131	93	175	9,659
XVII	419	341	227	186	164	103	68	158	5,824
XVIII	781	625	529	462	314	199	155	306	12,394
IXX	730	462	304	168	148	113	98	135	11,427
XX	1,284	837	602	395	306	245	157	222	18,488
Unknown	370	289	196	145	91	85	49	85	3,805
Rome	13,080	8,974	6,285	4,732	3,382	2,398	1,737	3,236	201,633

Table A2 Foreign citizens by age group, borough and gender, dicembre 31st 2003 (absolute values)
(continue)

Boroughs <i>Municipi</i>	Foreign citizens by age group, women									
	0-4	5-9	10-14	15-19	20-24	25-29	30-34	35-39	40-44	45-49
I	288	266	206	229	334	748	1,131	1,206	1,159	952
II	238	188	163	158	230	590	986	1,137	966	902
III	69	53	54	47	78	195	303	338	308	277
IV	181	167	178	143	248	504	660	742	607	498
V	203	161	131	135	239	435	610	604	436	352
VI	399	288	230	172	261	531	748	657	537	389
VII	344	261	199	130	189	458	646	588	386	301
VIII	525	310	289	252	356	742	1,009	771	568	397
IX	200	147	132	106	182	476	680	709	616	440
X	204	139	121	83	181	451	563	522	357	247
XI	232	177	138	121	225	473	619	670	525	432
XII	166	161	151	113	225	456	646	708	519	391
XIII	278	223	210	194	279	655	925	846	775	514
XV	378	288	202	144	273	545	832	773	568	374
XVI	189	143	139	122	231	592	733	814	663	520
XVII	79	79	58	80	128	303	506	518	422	333
XVIII	265	206	181	154	260	604	906	893	767	582
IXX	350	226	236	194	292	658	918	936	771	625
XX	454	372	373	341	476	935	1,430	1,363	1,244	1,054
Unknown	29	53	58	49	72	88	167	224	184	180
Rome	5,071	3,908	3,449	2,967	4,759	10,439	15,018	15,019	12,378	9,760

Boroughs <i>Municipi</i>	Foreign citizens by age group, women									Total
	50-54	55-59	60-64	65-69	70-74	75-79	80-84	85 +		
I	845	682	574	438	294	218	145	352	10,067	
II	667	500	393	289	197	149	114	290	8,157	
III	198	171	117	101	60	55	40	130	2,594	
IV	322	226	158	98	76	50	47	71	4,976	
V	197	132	66	39	26	24	8	17	3,815	
VI	217	124	64	69	43	24	15	18	4,786	
VII	161	84	50	53	23	16	10	11	3,910	
VIII	202	112	56	48	32	12	6	9	5,696	
IX	314	183	128	99	66	43	34	55	4,610	
X	140	102	51	53	20	27	11	27	3,299	
XI	338	202	147	116	74	49	25	43	4,606	
XII	278	181	145	91	68	42	45	45	4,431	
XIII	365	266	137	107	77	50	36	52	5,989	
XV	270	145	84	64	42	28	12	30	5,052	
XVI	406	300	213	186	121	82	51	106	5,611	
XVII	250	192	116	107	92	52	36	75	3,426	
XVIII	414	312	268	227	166	95	77	135	6,512	
IXX	416	285	194	100	77	64	62	83	6,487	
XX	723	475	350	257	177	139	90	136	10,389	
Unknown	177	139	85	58	46	48	25	51	1,733	
Rome	6,900	4,813	3,396	2,600	1,777	1,267	889	1,736	106,146	

Source: Population register, City of Rome

Table A3 Foreign citizens by age group, borough and gender, Dicembre 31st 2003 (in % of total)

Boroughs <i>Municipi</i>	Foreign citizens by age group, total (in %)									
	0-4	5-9	10-14	15-19	20-24	25-29	30-34	35-39	40-44	45-49
I	2.7	2.4	2.0	2.0	3.5	7.9	11.3	12.5	11.3	9.4
II	3.8	3.0	2.5	2.3	3.1	6.3	10.8	13.1	11.8	10.7
III	3.1	2.4	3.0	2.3	3.6	6.7	10.7	12.7	11.7	11.2
IV	4.2	3.7	4.3	3.6	4.8	9.1	12.2	13.7	12.3	10.5
V	5.6	4.7	3.9	3.7	5.7	10.5	14.7	15.3	11.3	9.7
VI	7.9	5.8	4.6	3.5	5.2	9.6	14.6	15.4	12.8	9.0
VII	8.7	6.3	5.0	3.7	4.3	10.7	15.7	16.0	11.5	8.2
VIII	9.3	5.4	5.2	4.4	6.0	12.0	16.6	15.2	10.5	7.4
IX	5.5	4.1	3.5	3.0	4.3	9.2	14.7	15.1	12.9	9.4
X	7.1	4.8	4.1	3.2	5.3	11.9	15.9	16.4	11.5	7.4
XI	5.4	4.3	3.7	3.0	4.7	9.7	13.0	14.7	12.1	9.1
XII	4.4	3.8	3.7	3.0	5.0	9.1	13.3	15.1	11.7	8.8
XIII	4.9	3.9	3.6	3.3	4.4	9.8	14.1	14.6	13.2	10.3
XV	7.7	5.7	3.9	3.5	5.1	10.2	15.7	16.1	12.3	7.5
XVI	4.1	3.2	2.9	2.4	4.0	9.1	12.6	14.9	12.4	9.9
XVII	3.1	2.7	2.0	2.6	3.3	7.9	13.3	14.7	12.2	9.7
XVIII	4.3	3.4	3.0	2.5	3.6	8.1	12.9	14.0	12.2	8.8
IXX	6.3	4.7	4.1	3.5	4.4	9.0	13.4	14.3	11.9	9.5
XX	5.0	4.2	4.2	3.4	4.5	8.2	13.0	13.4	12.0	10.3
Unknown	1.9	2.9	3.2	2.8	3.9	5.5	9.1	12.9	12.3	11.1
Rome	5.2	4.0	3.6	3.1	4.4	9.0	13.3	14.3	12.0	9.4

Boroughs <i>Municipi</i>	Foreign citizens by age group, total (in%)								
	50-54	55-59	60-64	65-69	70-74	75-79	80-84	85+	Total
I	7.8	6.9	5.7	4.4	3.1	2.2	1.7	3.5	100.0
II	8.2	6.1	4.8	3.5	2.6	2.1	1.6	3.9	100.0
III	8.5	6.5	4.4	3.7	2.1	2.0	1.3	4.1	100.0
IV	6.6	4.8	3.3	2.2	1.6	1.0	0.8	1.2	100.0
V	6.9	3.5	1.8	1.0	0.7	0.5	0.2	0.4	100.0
VI	5.0	2.6	1.3	1.1	0.7	0.3	0.2	0.3	100.0
VII	4.5	2.1	1.1	1.0	0.5	0.3	0.2	0.2	100.0
VIII	3.9	1.8	0.7	0.7	0.5	0.2	0.1	0.1	100.0
IX	6.4	3.6	2.5	1.8	1.2	0.9	0.6	1.2	100.0
X	4.5	2.7	1.5	1.3	0.7	0.6	0.3	0.8	100.0
XI	6.7	4.1	2.9	2.3	1.7	1.0	0.6	1.0	100.0
XII	6.5	4.2	3.4	2.3	1.9	1.4	1.1	1.1	100.0
XIII	6.4	4.3	2.3	1.6	1.3	0.7	0.6	0.7	100.0
XV	4.9	2.6	1.4	1.1	0.9	0.5	0.3	0.6	100.0
XVI	7.1	5.1	3.4	2.9	1.8	1.4	1.0	1.8	100.0
XVII	7.2	5.9	3.9	3.2	2.8	1.8	1.2	2.7	100.0
XVIII	6.3	5.0	4.3	3.7	2.5	1.6	1.3	2.5	100.0
IXX	6.4	4.0	2.7	1.5	1.3	1.0	0.9	1.2	100.0
XX	6.9	4.5	3.3	2.1	1.7	1.3	0.8	1.2	100.0
Unknown	9.7	7.6	5.2	3.8	2.4	2.2	1.3	2.2	100.0
Rome	6.5	4.5	3.1	2.3	1.7	1.2	0.9	1.6	100.0

Table A3 Foreign citizens by age group, borough and gender, Dicembre 31st 2003 (in % of total)
(continue)

Boroughs <i>Municipi</i>	Foreign citizens by age group, women (in%)									
	0-4	5-9	10-14	15-19	20-24	25-29	30-34	35-39	40-44	45-49
I	2.9	2.6	2.0	2.3	3.3	7.4	11.2	12.0	11.5	9.5
II	2.9	2.3	2.0	1.9	2.8	7.2	12.1	13.9	11.8	11.1
III	2.7	2.0	2.1	1.8	3.0	7.5	11.7	13.0	11.9	10.7
IV	3.6	3.4	3.6	2.9	5.0	10.1	13.3	14.9	12.2	10.0
V	5.3	4.2	3.4	3.5	6.3	11.4	16.0	15.8	11.4	9.2
VI	8.3	6.0	4.8	3.6	5.5	11.1	15.6	13.7	11.2	8.1
VII	8.8	6.7	5.1	3.3	4.8	11.7	16.5	15.0	9.9	7.7
VIII	9.2	5.4	5.1	4.4	6.3	13.0	17.7	13.5	10.0	7.0
IX	4.3	3.2	2.9	2.3	3.9	10.3	14.8	15.4	13.4	9.5
X	6.2	4.2	3.7	2.5	5.5	13.7	17.1	15.8	10.8	7.5
XI	5.0	3.8	3.0	2.6	4.9	10.3	13.4	14.5	11.4	9.4
XII	3.7	3.6	3.4	2.6	5.1	10.3	14.6	16.0	11.7	8.8
XIII	4.6	3.7	3.5	3.2	4.7	10.9	15.4	14.1	12.9	8.6
XV	7.5	5.7	4.0	2.9	5.4	10.8	16.5	15.3	11.2	7.4
XVI	3.4	2.5	2.5	2.2	4.1	10.6	13.1	14.5	11.8	9.3
XVII	2.3	2.3	1.7	2.3	3.7	8.8	14.8	15.1	12.3	9.7
XVIII	4.1	3.2	2.8	2.4	4.0	9.3	13.9	13.7	11.8	8.9
IXX	5.4	3.5	3.6	3.0	4.5	10.1	14.2	14.4	11.9	9.6
XX	4.4	3.6	3.6	3.3	4.6	9.0	13.8	13.1	12.0	10.1
Unknown	1.7	3.1	3.3	2.8	4.2	5.1	9.6	12.9	10.6	10.4
Rome	4.8	3.7	3.2	2.8	4.5	9.8	14.1	14.1	11.7	9.2

Boroughs <i>Municipi</i>	Foreign citizens by age group, women (in%)									Total
	50-54	55-59	60-64	65-69	70-74	75-79	80-84	85+		
I	8.4	6.8	5.7	4.4	2.9	2.2	1.4	3.5	100.0	
II	8.2	6.1	4.8	3.5	2.4	1.8	1.4	3.6	100.0	
III	7.6	6.6	4.5	3.9	2.3	2.1	1.5	5.0	100.0	
IV	6.5	4.5	3.2	2.0	1.5	1.0	0.9	1.4	100.0	
V	5.2	3.5	1.7	1.0	0.7	0.6	0.2	0.4	100.0	
VI	4.5	2.6	1.3	1.4	0.9	0.5	0.3	0.4	100.0	
VII	4.1	2.1	1.3	1.4	0.6	0.4	0.3	0.3	100.0	
VIII	3.5	2.0	1.0	0.8	0.6	0.2	0.1	0.2	100.0	
IX	6.8	4.0	2.8	2.1	1.4	0.9	0.7	1.2	100.0	
X	4.2	3.1	1.5	1.6	0.6	0.8	0.3	0.8	100.0	
XI	7.3	4.4	3.2	2.5	1.6	1.1	0.5	0.9	100.0	
XII	6.3	4.1	3.3	2.1	1.5	0.9	1.0	1.0	100.0	
XIII	6.1	4.4	2.3	1.8	1.3	0.8	0.6	0.9	100.0	
XV	5.3	2.9	1.7	1.3	0.8	0.6	0.2	0.6	100.0	
XVI	7.2	5.3	3.8	3.3	2.2	1.5	0.9	1.9	100.0	
XVII	7.3	5.6	3.4	3.1	2.7	1.5	1.1	2.2	100.0	
XVIII	6.4	4.8	4.1	3.5	2.5	1.5	1.2	2.1	100.0	
IXX	6.4	4.4	3.0	1.5	1.2	1.0	1.0	1.3	100.0	
XX	7.0	4.6	3.4	2.5	1.7	1.3	0.9	1.3	100.0	
Unknown	10.2	8.0	4.9	3.3	2.7	2.8	1.4	2.9	100.0	
Rome	6.5	4.5	3.2	2.4	1.7	1.2	0.8	1.6	100.0	

Source, Population register, City of Rome

Table A4 Young citizens by age group, borough, citizenship and gender, Dicembre 31st 2003

Boroughs <i>Municipi</i>	Young foreign citizens by age group. total									
	<1		<3		0-6		3-5		0-14	
	abs	%	abs	%	abs	%	abs	%	abs	%
I	133	0.6	373	1.6	811	3.6	347	1.5	1,593	7.0
II	108	0.8	316	2.4	663	5.0	267	2.0	1,221	9.3
III	32	0.7	92	2.0	193	4.2	71	1.5	391	8.5
IV	60	0.7	211	2.4	491	5.6	224	2.5	1,075	12.2
V	90	1.2	252	3.4	566	7.6	245	3.3	1,054	14.1
VI	178	1.7	546	5.3	1,092	10.6	421	4.1	1,893	18.3
VII	140	1.7	438	5.5	945	11.8	390	4.9	1,604	20.0
VIII	259	2.2	733	6.1	1,383	11.6	519	4.4	2,375	19.9
IX	81	1.0	280	3.5	573	7.2	228	2.9	1,045	13.1
X	80	1.3	282	4.6	571	9.3	226	3.7	981	15.9
XI	94	1.1	310	3.5	645	7.3	261	3.0	1,186	13.5
XII	89	1.1	217	2.7	484	6.1	198	2.5	950	12.0
XIII	110	0.9	367	3.1	783	6.5	321	2.7	1,488	12.4
XV	168	1.7	482	4.8	1,002	9.9	424	4.2	1,755	17.3
XVI	78	0.8	245	2.5	515	5.3	207	2.1	979	10.1
XVII	39	0.7	106	1.8	251	4.3	108	1.9	453	7.8
XVIII	94	0.8	328	2.6	713	5.8	289	2.3	1,315	10.6
IXX	157	1.4	473	4.1	962	8.4	372	3.3	1,730	15.1
XX	180	1.0	565	3.1	1,222	6.6	517	2.8	2,485	13.4
Rome*	2,170	1.1	6,616	3.3	13,865	6.9	5,681	2.8	25,877	12.8

Boroughs <i>Municipi</i>	Young Italian citizens by age group. total									
	<1		<3		0-6		3-5		0-14	
	abs	%	abs	%	abs	%	abs	%	abs	%
I	720	0.7	1,677	1.7	3,969	4.0	2,317	2.3	11,013	11.1
II	789	0.7	2,186	2.0	5,475	4.9	2,863	2.6	13,914	12.6
III	364	0.7	1,014	2.0	2,389	4.6	1,146	2.2	5,791	11.2
IV	1,393	0.7	4,188	2.2	9,770	5.0	4,639	2.4	23,401	12.1
V	1,347	0.8	4,071	2.3	10,243	5.8	5,030	2.8	23,911	13.5
VI	747	0.6	1,880	1.6	5,030	4.2	2,966	2.5	14,102	11.9
VII	945	0.8	2,410	2.1	6,233	5.3	3,406	2.9	16,277	13.9
VIII	1,818	1.0	5,142	2.7	12,578	6.6	6,391	3.3	30,988	16.2
IX	853	0.7	2,328	1.9	5,664	4.6	2,861	2.3	13,736	11.1
X	1,425	0.8	4,120	2.4	9,816	5.6	4,634	2.7	22,809	13.1
XI	909	0.7	2,545	2.0	6,135	4.7	3,093	2.4	15,190	11.7
XII	1,458	0.9	4,428	2.8	10,582	6.7	4,995	3.1	24,005	15.1
XIII	1,825	1.0	5,461	2.9	13,026	6.9	6,246	3.3	28,944	15.3
XV	1,168	0.8	3,038	2.1	7,500	5.2	4,000	2.8	18,183	12.7
XVI	1,058	0.8	2,999	2.2	7,204	5.3	3,499	2.6	16,996	12.5
XVII	448	0.7	1,268	1.9	2,977	4.4	1,456	2.1	7,176	10.5
XVIII	990	0.8	2,748	2.2	6,743	5.5	3,446	2.8	16,239	13.2
IXX	1,468	0.9	4,048	2.4	9,751	5.8	4,910	2.9	23,786	14.1
XX	1,089	0.8	2,854	2.2	7,134	5.5	4,243	3.3	19,609	15.1
Rome*	20,835	0.8	58,394	2.2	142,163	5.4	72,245	2.8	346,639	13.3

Table A4 Young citizens by age group, borough, citizenship and gender, Dicembre 31st 2003
(continue)

Boroughs <i>Municipi</i>	Young foreign citizens by age group, girls									
	<1		<3		0-6		3-5		0-14	
	abs	%	abs	%	abs	%	abs	%	abs	%
I	61	0.6	183	1.8	398	4.0	166	1.6	760	7.5
II	54	0.7	149	1.8	314	3.8	128	1.6	589	7.2
III	16	0.6	45	1.7	89	3.4	35	1.3	176	6.8
IV	34	0.7	106	2.1	237	4.8	109	2.2	526	10.6
V	48	1.3	128	3.4	272	7.1	110	2.9	495	13.0
VI	88	1.8	268	5.6	531	11.1	207	4.3	917	19.2
VII	78	2.0	224	5.7	466	11.9	190	4.9	804	20.6
VIII	113	2.0	340	6.0	646	11.3	250	4.4	1,124	19.7
IX	37	0.8	119	2.6	264	5.7	115	2.5	479	10.4
X	39	1.2	134	4.1	270	8.2	109	3.3	464	14.1
XI	45	1.0	145	3.1	303	6.6	132	2.9	547	11.9
XII	44	1.0	110	2.5	241	5.4	94	2.1	478	10.8
XIII	58	1.0	175	2.9	374	6.2	154	2.6	711	11.9
XV	80	1.6	235	4.7	493	9.8	202	4.0	868	17.2
XVI	42	0.7	117	2.1	246	4.4	99	1.8	471	8.4
XVII	17	0.5	46	1.3	113	3.3	47	1.4	216	6.3
XVIII	44	0.7	170	2.6	361	5.5	140	2.1	652	10.0
IXX	72	1.1	232	3.6	448	6.9	166	2.6	812	12.5
XX	87	0.8	271	2.6	603	5.8	265	2.6	1,199	11.5
Rome*	1,067	1.0	3,217	3.0	196	0.2	2,734	2.6	12,428	11.7

Boroughs <i>Municipi</i>	Young Italian citizens by age group, girls									
	<1		<3		0-6		3-5		0-14	
	abs	%	abs	%	abs	%	abs	%	abs	%
I	348	0.7	819	1.6	1,965	3.8	1,114	2.2	5,768	11.2
II	412	0.7	1,080	1.8	2,601	4.3	1,334	2.2	7,005	11.5
III	189	0.7	511	1.8	1,171	4.2	540	1.9	2,814	10.0
IV	697	0.7	2,038	2.0	4,750	4.6	2,287	2.2	11,602	11.3
V	673	0.7	1,984	2.2	4,955	5.4	2,405	2.6	11,831	12.9
VI	379	0.6	945	1.5	2,473	4.0	1,426	2.3	7,307	11.7
VII	439	0.7	1,161	1.9	3,043	5.0	1,680	2.8	8,421	13.9
VIII	923	1.0	2,546	2.6	6,063	6.3	3,043	3.1	15,479	16.0
IX	431	0.6	1,140	1.7	2,836	4.2	1,439	2.1	6,955	10.3
X	673	0.7	1,976	2.2	4,714	5.2	2,229	2.4	11,203	12.3
XI	436	0.6	1,202	1.7	2,983	4.3	1,524	2.2	7,677	11.1
XII	715	0.9	2,157	2.6	5,092	6.3	2,384	2.9	11,721	14.4
XIII	911	0.9	2,650	2.7	6,318	6.5	3,029	3.1	14,394	14.9
XV	574	0.8	1,487	2.0	3,592	4.8	1,925	2.6	9,187	12.3
XVI	486	0.7	1,420	2.0	3,474	4.8	1,695	2.3	8,450	11.6
XVII	200	0.5	628	1.7	1,451	3.9	701	1.9	3,614	9.7
XVIII	486	0.8	1,299	2.0	3,263	5.0	1,694	2.6	8,234	12.7
IXX	729	0.8	2,118	2.4	4,899	5.5	2,363	2.7	12,033	13.5
XX	515	0.8	1,369	2.0	3,474	5.1	2,076	3.1	10,053	14.8
Rome*	10,229	0.7	35,250	2.6	69,097	5.0	34,931	2.6	174,088	12.7

* The total for the City of Rome includes data for unknown borough.

Source: Population register, City of Rome

Table A5 Foreign citizens regarding majority by borough, men, Dicembre 31st 2003

Boroughs <i>Municipi</i>	Foreign citizens, men (absolute values)			Foreign citizens, men (in %)		
	0-17	18 +	Total	0-17	18 +	Total
I	1,941	20,765	22,706	8.5	91.5	100.0
II	1,461	11,724	13,185	11.1	88.9	100.0
III	482	4,105	4,587	10.5	89.5	100.0
IV	1,314	7,482	8,796	14.9	85.1	100.0
V	1,278	6,180	7,458	17.1	82.9	100.0
VI	2,172	8,173	10,345	21.0	79.0	100.0
VII	1,848	6,188	8,036	23.0	77.0	100.0
VIII	2,778	9,149	11,927	23.3	76.7	100.0
IX	1,226	6,729	7,955	15.4	84.6	100.0
X	1,142	5,023	6,165	18.5	81.5	100.0
XI	1,395	7,422	8,817	15.8	84.2	100.0
XII	1,138	6,778	7,916	14.4	85.6	100.0
XIII	1,794	10,230	12,024	14.9	85.1	100.0
XV	2,002	8,117	10,119	19.8	80.2	100.0
XVI	1,149	8,510	9,659	11.9	88.1	100.0
XVII	568	5,256	5,824	9.8	90.2	100.0
XVIII	1,555	10,839	12,394	12.5	87.5	100.0
IXX	2,045	9,382	11,427	17.9	82.1	100.0
XX	2,969	15,519	18,488	16.1	83.9	100.0
Unknown	387	3,418	3,805	10.2	89.8	100.0
Rome	30,644	170,989	201,633	15.2	84.8	100.0

Source: Population register, City of Rome

Table A6 Foreign citizens regarding majority, by citizenship and borough, women, Decembre 31st 2003

Boroughs <i>Municipi</i>	Foreign citizens, women (absolute values)			Foreign citizens, women (in %)		
	0-17	18 +	Total	0-17	18 +	Total
I	940	9,127	10,067	9.3	90.7	100.0
II	718	7,439	8,157	8.8	91.2	100.0
III	217	2,377	2,594	8.4	91.6	100.0
IV	631	4,345	4,976	12.7	87.3	100.0
V	596	3,219	3,815	15.6	84.4	100.0
VI	1,055	3,731	4,786	22.0	78.0	100.0
VII	908	3,002	3,910	23.2	76.8	100.0
VIII	1,320	4,376	5,696	23.2	76.8	100.0
IX	561	4,049	4,610	12.2	87.8	100.0
X	531	2,768	3,299	16.1	83.9	100.0
XI	639	3,967	4,606	13.9	86.1	100.0
XII	565	3,866	4,431	12.8	87.2	100.0
XIII	859	5,130	5,989	14.3	85.7	100.0
XV	970	4,082	5,052	19.2	80.8	100.0
XVI	561	5,050	5,611	10.0	90.0	100.0
XVII	279	3,147	3,426	8.1	91.9	100.0
XVIII	763	5,749	6,512	11.7	88.3	100.0
IXX	962	5,525	6,487	14.8	85.2	100.0
XX	1,462	8,927	10,389	14.1	85.9	100.0
Unknown	181	1,552	1,733	10.4	89.6	100.0
Rome	14,718	91,428	106,146	13.9	86.1	100.0

Source: Population register, City of Rome

Table A7 Foreign citizens according to marital status, 1998–2003

Year	Foreign citizens, total					
		Unmarried	Married	Widowed	Divorced	Total
1998	abs	87.584	53.367	2.115	2.223	145.289
	%	60,3	36,7	1,5	1,5	100,0
1999	abs	90.360	56.313	2.178	2.370	151.221
	%	59,8	37,2	1,4	1,6	100,0
2000	abs	99.909	63.965	2.418	2.772	169.064
	%	59,1	37,8	1,4	1,6	100,0
2001	abs	105.915	68.716	2.552	3.050	180.233
	%	58,8	38,1	1,4	1,7	100,0
2002	abs	108.822	71.793	2.670	3.196	186.481
	%	58,4	38,5	1,4	1,7	100,0
2003	abs	117.038	78.149	2.939	3.507	201.633
	%	58,0	38,8	1,5	1,7	100,0

Year	Foreign citizens, women					
		Unmarried	Married	Widowed	Divorced	Total
1998	abs	44.537	26.628	1.760	1.561	74.486
	%	59,8	35,7	2,4	2,1	100,0
1999	abs	45.729	28.247	1.812	1.662	77.450
	%	59,0	36,5	2,3	2,1	100,0
2000	abs	50.525	32.370	2.024	1.976	86.895
	%	58,1	37,3	2,3	2,3	100,0
2001	abs	53.763	35.086	2.138	2.197	93.184
	%	57,7	37,7	2,3	2,4	100,0
2002	abs	55.436	37.032	2.253	2.310	97.031
	%	57,1	38,2	2,3	2,4	100,0
2003	abs	60.044	41.033	2.501	2.568	106.146
	%	56,6	38,7	2,4	2,4	100,0

Year	Foreign citizens, men					
		Unmarried	Married	Widowed	Divorced	Total
1998	abs	43.047	26.739	355	662	70.803
	%	60,8	37,8	0,5	0,9	100,0
1999	abs	44.631	28.066	366	708	73.771
	%	60,5	38,0	0,5	1,0	100,0
2000	abs	49.384	31.595	394	796	82.169
	%	60,1	38,5	0,5	1,0	100,0
2001	abs	52.152	33.630	414	853	87.049
	%	59,9	38,6	0,5	1,0	100,0
2002	abs	53.386	34.761	417	886	89.450
	%	59,7	38,9	0,5	1,0	100,0
2003	abs	56.994	37.116	438	939	95.487
	%	59,7	38,9	0,5	1,0	100,0

Note: Data for 1997 are not available

Source: Population register, City of Rome

Table A8 Demographic indicators by citizenship, Dicembre 31st 2003

Boroughs <i>Municipi</i>	Index of ageing		Sex ratio		Index of economic dependence		Population under 15 (in %)		Ratio Foreign to Italian population (in %)
	Italian	Foreign	Italian	Foreign	Italian	Foreign	Italian	Foreign	
I	232.4	211.9	91.7	125.5	51.9	28.0	10.3	7.0	22.9
II	213.9	146.9	82.1	61.6	60.5	29.6	12.0	9.3	11.9
III	230.5	154.5	83.7	76.8	55.4	27.7	10.8	8.5	8.9
IV	180.0	56.5	89.5	76.8	49.2	23.6	11.8	12.2	4.5
V	129.7	20.0	93.8	95.5	43.4	20.4	13.2	14.1	4.2
VI	223.8	14.6	90.0	116.2	55.6	26.5	11.0	18.3	8.7
VII	153.6	11.1	92.4	105.5	50.5	28.5	13.2	20.0	6.9
VIII	94.3	7.7	97.5	109.4	43.2	27.3	15.5	19.9	6.2
IX	242.5	43.6	83.1	72.6	57.7	23.3	10.7	13.1	6.5
X	156.7	24.0	91.9	86.9	48.7	24.6	12.8	15.9	3.5
XI	211.5	49.4	87.7	91.4	53.7	25.2	11.2	13.5	6.8
XII	108.0	65.6	95.0	78.7	44.5	24.8	14.8	12.0	5.0
XIII	106.2	40.2	94.8	100.8	44.4	21.0	14.9	12.4	6.4
XV	167.3	19.5	91.4	100.3	47.6	26.1	12.1	17.3	7.1
XVI	195.6	87.7	86.2	72.1	56.1	23.5	12.2	10.1	7.1
XVII	258.5	149.9	83.3	70.0	57.6	24.1	10.2	7.8	8.6
XVIII	169.2	109.2	89.7	90.3	51.9	28.5	12.7	10.6	10.1
IXX	152.0	38.3	89.6	76.2	51.8	26.5	13.5	15.1	6.8
XX	135.4	53.3	91.3	78.0	49.8	26.0	14.1	13.4	14.3
Unknown	342.7	149.7	131.5	119.6	42.4	24.9	6.7	8.0	63.2
Rome	161.2	59.8	90.5	90.0	50.0	25.8	12.8	12.8	7.7

Source: Population register, City of Rome

Index of ageing = (population 65 +/population 0-14) * 100

Sex ratio = (men/women) * 100

Index of economic dependance = [(population 0-14 + population 65+)/population 15-64] * 100

Table A9 Foreign citizens regarding majority, by borough and origin, Decembre 31st 2003

Boroughs <i>Municipi</i>	Area of origin	Foreign citizens by age group		Foreign citizens, total	
		0-17	18+	Abs	%
I	EU	143	4.614	4.757	21.3
	Non-EU	1.703	15.893	17.596	78.7
	<i>Total</i>	<i>1.846</i>	<i>20.507</i>	<i>22.353</i>	<i>100.0</i>
II	EU	132	2.322	2.454	18.8
	Non-EU	1.256	9.325	10.581	81.2
	<i>Total</i>	<i>1.388</i>	<i>11.647</i>	<i>13.035</i>	<i>100.0</i>
III	EU	23	916	939	21.0
	Non-EU	433	3.104	3.537	79.0
	<i>Total</i>	<i>456</i>	<i>4.020</i>	<i>4.476</i>	<i>100.0</i>
IV	EU	18	1.046	1.064	12.2
	Non-EU	1.240	6.389	7.629	87.8
	<i>Total</i>	<i>1.258</i>	<i>7.435</i>	<i>8.693</i>	<i>100.0</i>
V	EU	17	636	653	8.8
	Non-EU	1.206	5.561	6.767	91.2
	<i>Total</i>	<i>1.223</i>	<i>6.197</i>	<i>7.420</i>	<i>100.0</i>
VI	EU	16	481	497	4.8
	Non-EU	2.078	7.718	9.796	95.2
	<i>Total</i>	<i>2.094</i>	<i>8.199</i>	<i>10.293</i>	<i>100.0</i>
VII	EU	10	368	378	4.7
	Non-EU	1.768	5.845	7.613	95.3
	<i>Total</i>	<i>1.778</i>	<i>6.213</i>	<i>7.991</i>	<i>100.0</i>
VIII	EU	22	360	382	3.2
	Non-EU	2.664	8.849	11.513	96.8
	<i>Total</i>	<i>2.686</i>	<i>9.209</i>	<i>11.895</i>	<i>100.0</i>
IX	EU	22	921	943	12.0
	Non-EU	1.168	5.744	6.912	88.0
	<i>Total</i>	<i>1.190</i>	<i>6.665</i>	<i>7.855</i>	<i>100.0</i>
X	EU	19	495	514	8.4
	Non-EU	1.084	4.537	5.621	91.6
	<i>Total</i>	<i>1.103</i>	<i>5.032</i>	<i>6.135</i>	<i>100.0</i>
XI	EU	41	1.126	1.167	13.3
	Non-EU	1.298	6.281	7.579	86.7
	<i>Total</i>	<i>1.339</i>	<i>7.407</i>	<i>8.746</i>	<i>100.0</i>
XII	EU	60	1.181	1.241	15.8
	Non-EU	1.020	5.587	6.607	84.2
	<i>Total</i>	<i>1.080</i>	<i>6.768</i>	<i>7.848</i>	<i>100.0</i>
XIII	EU	110	1.687	1.797	15.1
	Non-EU	1.588	8.540	10.128	84.9
	<i>Total</i>	<i>1.698</i>	<i>10.227</i>	<i>11.925</i>	<i>100.0</i>
XV	EU	22	709	731	7.3
	Non-EU	1.912	7.422	9.334	92.7
	<i>Total</i>	<i>1.934</i>	<i>8.131</i>	<i>10.065</i>	<i>100.0</i>
XVI	EU	52	1.496	1.548	16.2
	Non-EU	1.057	6.954	8.011	83.8
	<i>Total</i>	<i>1.109</i>	<i>8.450</i>	<i>9.559</i>	<i>100.0</i>
XVII	EU	34	1.069	1.103	19.2
	Non-EU	492	4.162	4.654	80.8
	<i>Total</i>	<i>526</i>	<i>5.231</i>	<i>5.757</i>	<i>100.0</i>
XVIII	EU	71	1.882	1.953	16.0
	Non-EU	1.411	8.821	10.232	84.0
	<i>Total</i>	<i>1.482</i>	<i>10.703</i>	<i>12.185</i>	<i>100.0</i>
IXX	EU	31	1.057	1.088	9.6

Boroughs <i>Municipi</i>	Area of origin	Foreign citizens by age group		Foreign citizens, total	
		0-17	18+	Abs	%
XX	Non-EU	1.935	8.304	10.239	90.4
	<i>Total</i>	<i>1.966</i>	<i>9.361</i>	<i>11.327</i>	<i>100.0</i>
	EU	226	2.111	2.337	12.8
Unknown	Non-EU	2.629	13.325	15.954	87.2
	<i>Total</i>	<i>2.855</i>	<i>15.436</i>	<i>18.291</i>	<i>100.0</i>
	EU	15	610	625	17.7
Rome	Non-EU	353	2.548	2.901	82.3
	<i>Total</i>	<i>368</i>	<i>3.158</i>	<i>3.526</i>	<i>100.0</i>
	EU	1.084	25.087	26.171	13.0
	Non-EU	28.295	144.909	173.204	85.9
	<i>Not indicated</i>	111	2.147	2.258	1.1
	<i>Total</i>	29.490	172.143	201.633	100.0

Source: Population register, City of Rome

Table A10 Foreign citizens by period of arrival and boroughs, Decembre 31st 2003

Boroughs <i>Municipi</i>	Year of arrival											
	Before 1970		1970 to 1979		1980 to 1989		1990 to 1999		2000 to 2003		Total	
	Total	Women	Total	Women	Total	Women	Total	Women	Total	Women	Total	Women
I	2,080	824	2,294	885	3,712	1,686	8,090	3,686	6,530	2,986	22,706	10,067
II	1,295	705	1,010	507	1,966	1,193	5,206	3,353	3,708	2,399	13,185	8,157
III	478	274	426	198	830	425	1,752	1,028	1,101	669	4,587	2,594
IV	419	168	543	247	1,209	642	3,713	2,131	2,912	1,788	8,796	4,976
V	128	61	323	94	888	389	3,338	1,723	2,781	1,548	7,458	3,815
VI	118	65	183	65	980	413	5,447	2,417	3,617	1,826	10,345	4,786
VII	99	59	136	55	638	274	4,067	1,981	3,096	1,541	8,036	3,910
VIII	52	30	114	56	807	356	4,940	2,359	6,014	2,895	11,927	5,696
IX	279	152	318	191	999	655	3,526	1,991	2,833	1,621	7,955	4,610
X	139	70	145	75	481	253	2,984	1,549	2,416	1,352	6,165	3,299
XI	226	103	413	211	1,124	522	4,037	2,126	3,017	1,644	8,817	4,606
XII	274	141	546	242	990	518	3,263	1,837	2,843	1,693	7,916	4,431
XIII	263	128	703	328	1,870	833	5,055	2,483	4,133	2,217	12,024	5,989
XV	215	117	242	114	760	395	5,186	2,515	3,716	1,911	10,119	5,052
XVI	426	243	586	329	1,456	824	4,156	2,387	3,035	1,828	9,659	5,611
XVII	365	172	379	190	778	428	2,507	1,545	1,795	1,091	5,824	3,426
XVIII	831	269	721	330	1,630	854	5,391	2,933	3,821	2,126	12,394	6,512
IXX	368	209	487	212	1,328	762	5,577	3,201	3,667	2,103	11,427	6,487
XX	721	419	1,196	645	2,633	1,554	7,960	4,431	5,978	3,340	18,488	10,389
Unknown	567	262	648	286	858	402	1,519	684	213	99	3,805	1,733
Rome	9,343	4,471	11,413	5,260	25,937	13,378	87,714	46,360	67,226	36,677	201,633	106,146

Source: Population register, City of Rome

Table A11 Arriving foreigners by borough, twenty most numerous nationalities, 1999

Country of origin	<i>Boroughs / Municipi</i>									
	I	II	III	IV	V	VI	VII	VIII	IX	X
Philippines	102	156	32	91	33	58	28	30	70	34
Rumania	47	24	11	69	64	54	74	231	40	87
Peru	25	52	16	41	43	48	35	29	71	32
Poland	38	20	10	24	34	29	23	31	26	32
Bangladesh	105	5	5	13	30	138	49	18	60	42
Egypt	7	6	4	14	24	45	57	22	18	16
China	63	18	8	10	28	62	24	42	44	24
Albania	4	13	3	19	29	17	19	75	13	28
Sri Lanka	21	45	5	6	7	15	4	5	5	5
India	36	12	4	11	7	10	10	6	10	6
Morocco	13	4	3	12	9	18	15	38	7	8
France	38	20	10	5	4	3		1	12	5
Brazil	24	6	7	5	4	10	4	3	19	6
Ecuador	17	8	7	8	6	8	11	11	7	6
Yugoslavia	36	3	1	7	12	9	15	19	6	2
Nigeria	6	3		1	8	11	19	66	1	8
Germany	27	13	4	4	6	5		3	9	4
Spain	18	11	2	9	8	4	2	6	12	6
United States	44	11	4	4	5		1	5	2	6
Colombia	9	5	3	13	3	16	5	3	12	7
Total	680	435	139	366	364	560	395	644	444	364
<i>Men</i>	351	179	57	146	181	292	196	330	183	166
<i>Women</i>	329	256	82	220	183	268	199	314	261	198

Country of origin	<i>Boroughs / Municipi</i>									
	XI	XII	XIII	XV	XVI	XVII	XVIII	IXX	XX	Rome*
Philippines	55	59	48	138	98	66	106	143	201	1,548
Rumania	53	67	155	143	42	13	74	77	186	1,512
Peru	40	24	28	26	31	20	35	70	71	737
Poland	34	30	86	35	42	27	31	68	38	658
Bangladesh	26	4	5	29	16	11	7	4	10	577
Egypt	23	7	49	96	20	14	28	25	23	498
China	21	7	12	23	10	13	13	6	12	440
Albania	14	21	44	29	12	9	12	24	12	401
Sri Lanka	13	26	55	10	15	13	12	34	77	373
India	14	5	6	7	33	14	35	16	9	252
Morocco	4	7	9	10	2	1	15	9	28	212
France	6	11	9	5	13	9	4	10	30	195
Brazil	11	11	8	15	8	10	19	10	6	186
Ecuador	9	6		4	10	13	10	22	22	185
Yugoslavia	5	4	6	11	4	4	12	5	5	177
Nigeria	2	1	2	2	2	7	9	6	9	164
Germany	5	5	6	6	13	7	28	4	9	158
Spain	10	12	4	5	10	4	22	6	4	155
United States	4	6	3	2	6	12	5	7	19	146
Colombia	9	7	3	4	5	3	11	17	8	144
Total	358	320	538	600	392	270	488	563	779	8,718
<i>Men</i>	160	155	283	319	157	111	198	230	359	4,063
<i>Women</i>	198	165	255	281	235	159	290	333	420	4,655

* The total for the City of Rome includes data for unknown borough.

Source: Population register, City of Rome

Table A12 Arriving foreigners by borough, twenty most numerous nationalities, 2000

Country of origin	<i>Boroughs / Municipi</i>									
	I	II	III	IV	V	VI	VII	VIII	IX	X
Romania	65	48	27	116	117	98	192	625	67	136
Philippines	145	226	36	76	38	66	35	32	67	35
Poland	69	29	13	44	42	47	46	47	55	35
Bangladesh	150	8	21	18	46	190	61	40	49	55
Peru	51	57	19	33	33	45	37	31	61	55
Albania	18	23	6	28	53	32	30	135	16	25
China	79	19	5	14	20	103	45	75	35	41
Egypt	13	11	5	16	21	28	66	16	23	14
Sri Lanka	17	47	6	12	7	11	6	14	9	9
Ecuador	17	37	5	19	9	16	14	11	23	8
India	33	18	5	9	17	19	22	8	18	6
Nigeria	7	1	4	3	13	9	44	104	1	7
Morocco	14	8	3	15	10	22	31	40	10	13
Brazil	24	9	8	7	13	6	8	7	15	11
France	63	16	8	3	7	4	3	2	10	5
Ukraine	21	6	1	15	10	6	11	18	11	13
Colombia	18	12	3	12	4	12	21	9	11	7
Ethiopia	24	10	2	9	10	10	18	13	7	14
Spain	19	13	8	7	3	3	3	10	6	6
Yugoslavia	10	8	3	4	8	6	26	46	9	2
Total	857	606	188	460	481	733	719	1,283	503	497
<i>Men</i>	446	220	79	199	229	391	365	735	214	246
<i>Women</i>	411	386	109	261	252	342	354	548	289	251

Country of origin	<i>Boroughs / Municipi</i>									
	XI	XII	XIII	XV	XVI	XVII	XVIII	IXX	XX	Rome *
Romania	81	102	219	231	93	26	190	124	300	2,866
Philippines	78	103	45	127	96	65	123	125	210	1,729
Poland	62	37	116	59	61	23	65	80	72	1,003
Bangladesh	96	14	22	51	20	18	7	15	10	891
Peru	55	28	19	44	33	31	43	75	87	838
Albania	18	33	44	36	14	1	25	54	20	612
China	40	6	21	35	5	14	13	9	3	582
Egypt	24	9	41	97	25	23	29	34	17	512
Sri Lanka	19	27	48	8	13	13	16	41	96	420
Ecuador	19	11	7	7	6	15	24	48	39	335
India	13	12	18	10	19	10	33	19	18	307
Nigeria	8	1	14	2	4	1	19	4	29	275
Morocco	8	3	15	6	8	5	12	9	28	260
Brazil	12	15	10	21	12	12	27	11	20	248
France	9	19	16	8	10	6	23	9	14	235
Ukraine	13	13	16	7	11	13	18	12	16	231
Colombia	8	6	11	19	9	9	12	17	22	222
Ethiopia	4	6	13	12	6	2	7	9	11	188
Spain	7	9	3	8	12	10	39	7	15	188
Yugoslavia	3	6	6	9	7	1	7	6	2	185
Total	577	460	704	797	464	298	732	708	1,029	12,127
<i>Men</i>	270	199	356	414	186	122	322	338	485	5,837
<i>Women</i>	307	261	348	383	278	176	410	370	544	6,290

* The total for the City of Rome includes data for unknown borough.

Source: Population register, City of Rome

Table A13 Arriving foreigners by borough, twenty most numerous nationalities, 2001

Country of origin	<i>Boroughs / Municipi</i>									
	I	II	III	IV	V	VI	VII	VIII	IX	X
Romania	81	51	18	96	94	89	131	506	50	134
Philippines	154	211	48	117	50	82	40	35	98	36
Poland	48	31	10	52	33	19	35	44	44	45
China	134	46	7	15	28	162	41	114	68	50
Bangladesh	168	14	8	32	29	161	47	28	63	60
Peru	45	57	22	32	42	40	32	37	61	41
Albania	11	20	18	41	55	31	41	107	20	39
Egypt	23	7	3	19	24	40	74	50	25	10
Sri Lanka	33	51	13	15	11	12	10	4	9	5
Ecuador	22	22	9	22	7	15	10	27	11	13
India	55	27	9	6	13	9	9	10	7	9
France	60	37	5	9	1	4	1	3	13	9
Morocco	8	8	3	10	8	25	33	50	11	17
Ukraine	17	14	6	22	12	16	12	17	17	11
Nigeria	5	5	1	2	14	17	28	94	7	16
Spain	35	21	10	6	7	2	11	7	17	4
Colombia	16	10	8	10	8	12	4	6	8	9
Yugoslavia	38	5		4	7	7	22	36	5	3
Great Britain	29	20	2	7	13	3	1		8	8
Brazil	21	6	6	6	14	2	6	9	15	8
Total	1,003	663	206	523	470	748	588	1,184	557	527
<i>Men</i>	545	248	88	218	208	378	290	600	270	236
<i>Women</i>	458	415	118	305	262	370	298	584	287	291

Country of origin	<i>Boroughs / Municipi</i>									
	XI	XII	XIII	XV	XVI	XVII	XVIII	IXX	XX	Rome *
Romania	58	101	152	256	100	20	126	128	233	2,432
Philippines	84	91	41	140	143	70	118	157	236	1,951
Poland	34	35	89	64	43	40	62	65	51	845
China	50	19	14	30	4	13	20	22	6	843
Bangladesh	71	14	10	33	15	18	6	11	13	801
Peru	33	21	21	33	38	13	39	64	82	757
Albania	21	35	54	30	27	8	38	45	20	661
Egypt	38	1	51	94	32	14	38	31	28	602
Sri Lanka	23	20	60	14	12	18	23	37	101	471
Ecuador	19	8	9	13	6	12	20	38	50	333
India	13	14	10	24	19	14	29	29	23	329
France	10	20	6	3	13	15	24	7	40	280
Morocco	7	7	15	10	9	1	10	17	23	272
Ukraine	18	15	15	12	10	5	12	14	14	259
Nigeria	3	9	7	4	2	1	14	7	16	252
Spain	4	8	7	13	19	23	29	7	14	245
Colombia	9	9	17	10	10	5	18	13	22	204
Yugoslavia	5	5	5	5	8	4	17	13	4	200
Great Britain	10	11	14	6	7	8	7	7	32	193
Brazil	1	12	7	12	12	6	20	16	10	189
Total	511	455	604	806	529	308	670	728	1,018	12,119
<i>Men</i>	242	174	296	382	218	138	288	327	471	5,627
<i>Women</i>	269	281	308	424	311	170	382	401	547	6,492

* The total for the City of Rome includes data for unknown borough.

Source: Population register, City of Rome

Table A14 Arriving foreigners by borough, twenty most numerous nationalities, 2002

Country of origin	<i>Boroughs / Municipi</i>									
	I	II	III	IV	V	VI	VII	VIII	IX	X
Romania	47	25	6	90	82	80	121	449	37	114
Philippines	144	211	54	81	49	67	27	24	84	29
China	107	10	7	22	43	127	47	133	62	31
Poland	41	17	22	42	30	21	23	23	30	20
Bangladesh	77	11	8	15	32	118	39	29	55	50
Egypt	16	6	5	16	22	64	70	27	20	18
Peru	31	52	18	26	23	32	27	22	38	41
Albania	14	10	22	11	42	31	36	133	15	25
Sri Lanka	13	50	9	19	7	19	10	8	10	9
France	61	54	10	9	4	9		12	13	1
Ecuador	14	21	6	26	7	25	12	19	24	18
India	79	15	7	7	5	22	8	10	8	1
Ukraine	18	15	3	15	12	8	12	27	18	19
Spain	29	25	3	6	5	9	10	6	7	2
Morocco	11	8	3	16	6	22	21	54	11	12
Colombia	24	4	6	5	14	19	12	16	17	5
Yugoslavia	19	3		5	8	6	39	51	10	6
Great Britain	43	9	3	5	3	5	4	2	10	4
Nigeria	8		1	5	7	11	24	92	1	2
Brazil	20	5	1	10	4	1	11	8	12	7
Total	816	551	194	431	405	696	553	1145	482	414
<i>Men</i>	376	232	88	179	184	341	280	570	228	177
<i>Women</i>	440	319	106	252	221	355	273	575	254	237

Country of origin	<i>Boroughs / Municipi</i>									
	XI	XII	XIII	XV	XVI	XVII	XVIII	IXX	XX	Rome*
Romania	53	68	161	160	69	19	84	104	184	1,956
Philippines	74	60	45	98	102	56	126	172	187	1,690
China	40	17	28	21	11	21	34	11	8	780
Poland	21	28	86	53	43	20	40	73	42	676
Bangladesh	46	6	12	42	21	9	19	17	6	613
Egypt	28	8	66	104	44	13	31	39	14	612
Peru	35	16	11	25	19	15	33	65	67	597
Albania	18	32	30	25	19	3	21	31	20	538
Sri Lanka	24	22	54	11	12	10	23	36	95	441
France	18	23	16	8	22	17	12	15	43	347
Ecuador	14	9	12	15	6	9	32	30	45	344
India	9	9	8	17	18	13	39	31	23	329
Ukraine	10	10	23	8	22	7	23	28	12	290
Spain	16	14	10	18	12	19	41	9	22	263
Morocco	7	9	8	14	5	3	13	8	11	242
Colombia	12	16	8	7	14	6	17	21	8	231
Yugoslavia	4	6	16	3	6	3	7	10	4	212
Great Britain	17	9	28	1	11	10	11	11	18	204
Nigeria	3	3	2	3	6		9	4	15	196
Brazil	9	11	10	8	15	11	22	12	13	190
Total	458	376	634	641	477	264	637	727	837	10,751
<i>Men</i>	224	169	308	284	204	110	263	304	396	4,924
<i>Women</i>	234	207	326	357	273	154	374	423	441	5,827

The total for the City of Rome includes data for unknown borough.

Source: Population register, City of Rome

Table A15 Arriving foreigners by borough, twenty most numerous nationalities, 2003

Country of origin	Boroughs / Municipi									
	I	II	III	IV	V	VI	VII	VIII	IX	X
Romania	144	177	37	243	299	212	250	805	138	243
Philippines	123	211	37	75	50	59	22	21	75	14
Ecuador	79	157	21	67	36	39	12	41	58	33
Ukraine	89	89	12	110	74	37	36	37	56	28
Peru	56	128	27	57	53	36	29	22	79	28
Bangladesh	216	18	11	28	55	144	51	74	57	58
Poland	42	30	13	89	58	34	25	40	30	22
China	155	24	7	14	31	130	41	103	79	36
Moldavia	31	42	9	52	35	17	32	45	38	15
Egypt	11	15	3	18	22	39	61	32	24	16
Albania	22	11	6	29	42	26	26	103	13	31
Sri Lanka	22	45	4	5	13	12	8	7	9	4
Colombia	35	27	9	18	10	28	25	23	22	11
India	44	26	5	13	5	21	21	9	5	6
Morocco	10	5	3	20	18	25	24	86	14	16
Brazil	24	18	4	17	16	11	7	7	17	9
Yugoslavia	17	17		5	5	8	30	78	3	5
Spain	25	36	2	11	3	8	5	5	11	5
France	58	33	10	10	8	1	2	5	10	5
Ethiopia	43	12	3	7	9	12	8	14	9	5
Total	1,246	1,121	223	888	842	899	715	1,557	747	590
<i>Men</i>	605	340	72	288	347	414	347	817	300	259
<i>Women</i>	641	781	151	600	495	485	368	740	447	331

Country of origin	Boroughs / Municipi									
	XI	XII	XIII	XV	XVI	XVII	XVIII	IXX	XX	Rome *
Romania	185	282	624	381	258	85	268	190	663	5,505
Philippines	70	79	47	103	121	71	106	119	160	1,564
Ecuador	45	67	36	28	52	64	45	67	256	1,203
Ukraine	54	55	99	27	49	34	44	44	66	1,047
Peru	65	35	35	31	49	45	38	83	128	1,025
Bangladesh	75	5	15	70	24	17	8	13	11	950
Poland	36	31	121	47	62	30	39	63	67	883
China	42	18	14	25	11	12	19	17	7	785
Moldavia	44	69	51	26	32	33	24	18	68	681
Egypt	25	13	117	100	47	11	21	24	36	637
Albania	15	30	36	25	16	4	23	30	27	517
Sri Lanka	13	16	73	6	18	20	6	31	76	388
Colombia	18	10	14	11	19	13	18	24	34	369
India	17	14	9	22	29	17	33	28	30	356
Morocco	10	10	20	6	3	4	12	9	30	326
Brazil	16	14	11	22	20	7	31	8	22	281
Yugoslavia	5	13	6	7	1	3	6	10	28	258
Spain	7	4	3	12	10	10	29	8	25	219
France	12	2	5	3	13	10	4	7	12	210
Ethiopia	12	7	5	11	12	2	12	8	8	199
Total	766	774	1,341	963	846	492	786	801	1,754	17,403
<i>Men</i>	314	272	598	487	318	160	368	327	744	7,400
<i>Women</i>	452	502	743	476	528	332	418	474	1,010	10,003

* The total for the City of Rome includes data for unknown borough.

Source: Population register, City of Rome

Table A16 Foreign citizens by gender, continent of origin and borough, 2003

		Foreigners (registered voters for the election of adjoint city council members)									
Continent	Gender	Boroughs / Municipi									
		I	II	III	IV	V	VI	VII	VIII	IX	X
Africa	Total	269	172	66	154	160	367	426	569	119	120
	Men	168	61	33	82	91	249	270	345	62	77
	Women	101	111	33	72	69	118	156	224	57	43
America	Total	254	300	84	171	127	157	118	119	228	179
	Men	102	69	23	65	45	51	33	40	75	68
	Women	152	231	61	106	82	106	85	79	153	111
Asia and Oceania	Total	2,864	1,453	416	710	583	2,303	852	720	1,287	736
	Men	1,995	577	184	366	358	1,576	544	440	759	496
	Women	869	876	232	344	225	727	308	280	528	240
Europe non EU	Total	318	97	201	179	189	161	170	625	171	182
	Men	127	17	123	77	95	87	89	376	46	71
	Women	191	80	78	102	94	74	81	249	125	111
Total	Total	3,705	2,022	767	1,214	1,059	2,988	1,566	2,033	1,805	1,217
	Men	2,392	724	363	590	589	1,963	936	1,201	942	712
	Women	1,313	1,298	404	624	470	1,025	630	832	863	505

		Foreigners (registered voters for the election of adjoint city council members)									
Continent	Gender	Boroughs / Municipi									
		XI	XII	XIII	XV	XVI	XVII	XVIII	IXX	XX	Rome
Africa	Total	102	74	316	202	149	65	141	200	301	3,972
	Men	61	28	253	159	102	45	92	114	173	2,465
	Women	41	46	63	43	47	20	49	86	128	1,507
America	Total	175	89	92	95	153	150	198	234	403	3,326
	Men	61	24	33	29	39	40	68	77	137	1,079
	Women	114	65	59	66	114	110	130	157	266	2,247
Asia and Oceania	Total	1,105	690	921	1,289	869	658	1,013	1,664	1,856	21,989
	Men	682	298	583	699	389	291	472	812	886	12,407
	Women	423	392	338	590	480	367	541	852	970	9,582
Europe non EU	Total	169	82	395	166	132	61	176	117	122	3,713
	Men	83	27	166	71	51	15	92	42	51	1,706
	Women	86	55	229	95	81	46	84	75	71	2,007
Total	Total	1,551	935	1,724	1,752	1,303	934	1,528	2,215	2,682	33,000
	Men	887	377	1,035	958	581	391	724	1,045	1,247	17,657
	Women	664	558	689	794	722	543	804	1,170	1,435	15,343

Source: List of voters for the election of the adjunct city council members to represent non-European Union immigrants residing or working or studying in Rome, end of 2003, City of Rome Population register, City of Rome

Table A17 Foreigners of voting age by gender and nationality, twenty most numerous nationalities, 2003

Country of citizenship	Foreigners (registered voters for the election of adjoint city council members)					
	Absolute values			In % of foreign citizens (population register)		
	Men	Women	Total	Men	Women	Total
Philippines	3,012	5,798	8,810	44.2	42.3	42.9
Bangladesh	5,068	894	5,962	113.5	73.0	104.8
Sri Lanka	1,533	1,126	2,659	60.5	54.9	58.0
China	1,272	986	2,258	43.3	38.8	41.2
Peru	588	1,258	1,846	25.6	25.7	25.7
India	1,106	633	1,739	55.8	29.5	42.1
Romania	853	815	1,668	11.6	11.4	11.5
Ecuador	306	618	924	39.2	34.9	36.2
Morocco	569	268	837	30.2	25.6	28.6
Egypt	605	102	707	12.4	6.8	11.1
Albania	457	223	680	25.6	16.1	21.5
Ukraine	129	472	601	46.2	29.6	32.1
Nigeria	280	203	483	26.9	18.6	22.7
Poland	81	243	324	2.7	4.5	3.8
Pakistan	247	42	289	31.6	24.4	30.3
Senegal	242	14	256	41.7	12.4	36.9
Capverde	46	190	236	14.2	13.7	13.8
Eritrea	41	161	202	23.0	21.5	21.8
Tunisia	101	68	169	9.6	10.6	9.9
Ethiopia	59	104	163	6.7	6.3	6.4
Other	1,062	1,125	2,187	4.5	4.5	4.5
Total	17,657	15,343	33,000	25.3	19.8	22.4

Source: List of voters for the election of the adjunct city council members to represent non-European Union immigrants residing or working or studying in Rome, end of 2003, City of Rome Population register, City of Rome

Table A18 Foreigners of voting age by nationality, men, twenty most numerous nationalities, end of 2003

Country of citizenship	Foreigners (registered voters for the election of adjunct city council members). men		Foreign citizens having the right to vote
	abs	in % of those having the right	
Bangladesh	5,068	113.5	4,466
Philippines	3,012	44.2	6,813
Sri Lanka	1,533	60.5	2,535
China	1,272	43.3	2,938
India	1,106	55.8	1,982
Romania	853	11.6	7,381
Egypt	605	12.4	4,879
Peru	588	25.6	2,295
Morocco	569	30.2	1,882
Albania	457	25.6	1,784
Ecuador	306	39.2	780
Nigeria	280	26.9	1,041
Pakistan	247	31.6	781
Senegal	242	41.7	580
Ukraine	129	46.2	279
Algeria	107	16.9	633
Tunisia	101	9.6	1,055
Poland	81	2.7	3,051
Ghana	67	38.5	174
Bosnia Herzegovina	62	18.8	330
Altri	972	4.0	24,025
Total	17,657	25.3	69,684

Source: List of voters for the election of the adjunct city council members to represent non-European Union immigrants residing or working or studying in Rome, end of 2003, City of Rome Population register, City of Rome

Table A18 Foreigners of voting age by nationality, women, twenty most numerous nationalities, 2003

Country of citizenship	Foreigners (registered voters for the election of adjunct city council members), women		Foreign citizens, women having the right to vote
	abs	in % of those having the right	
Philippines	5,798	42.3	13,707
Peru	1,258	25.7	4,891
Sri Lanka	1,126	54.9	2,051
China	986	38.8	2,540
Bangladesh	894	73.0	1,225
Romania	815	11.4	7,156
India	633	29.5	2,145
Ecuador	618	34.9	1,771
Ukraine	472	29.6	1,594
Morocco	268	25.6	1,048
Poland	243	4.5	5,438
Albania	223	16.1	1,386
Nigeria	203	18.6	1,089
Capverde	190	13.7	1,385
Eritrea	161	21.5	748
Ethiopia	104	6.3	1,661
Egypt	102	6.8	1,509
Colombia	101	8.2	1,234
Somalia	89	7.2	1,235
Moldavia	85	10.6	803
Altri	974	4.3	22,756
Total	15,343	19.8	77,372

Source: List of voters for the election of the adjunct city council members to represent non-European Union immigrants residing or working or studying in Rome, end of 2003, City of Rome Population register, City of Rome

Figure A1 Age pyramide by citizenship, dicembre 31st 2003

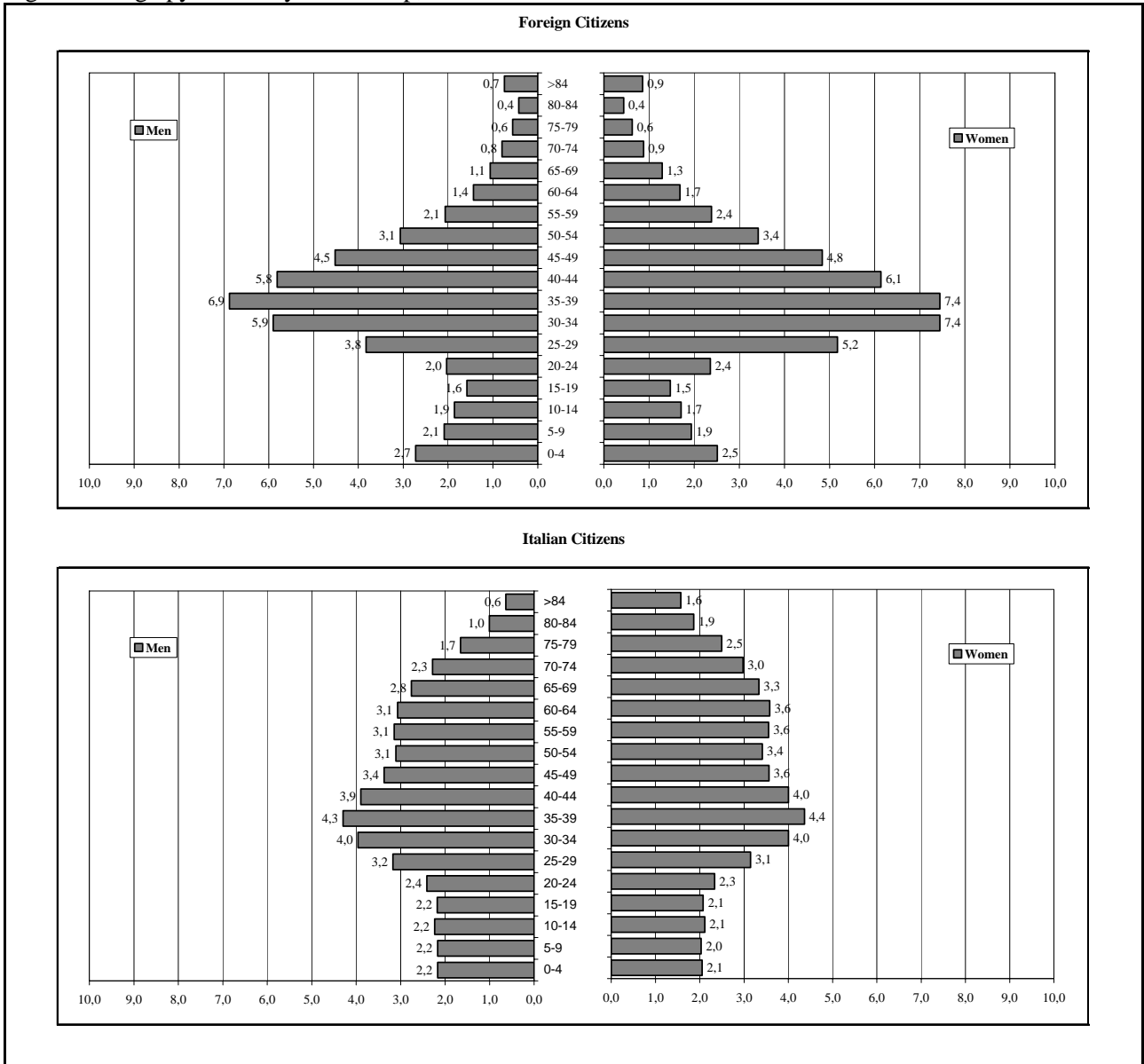


Figure A2 Demographic indicators by citizenship, December 31st 2003

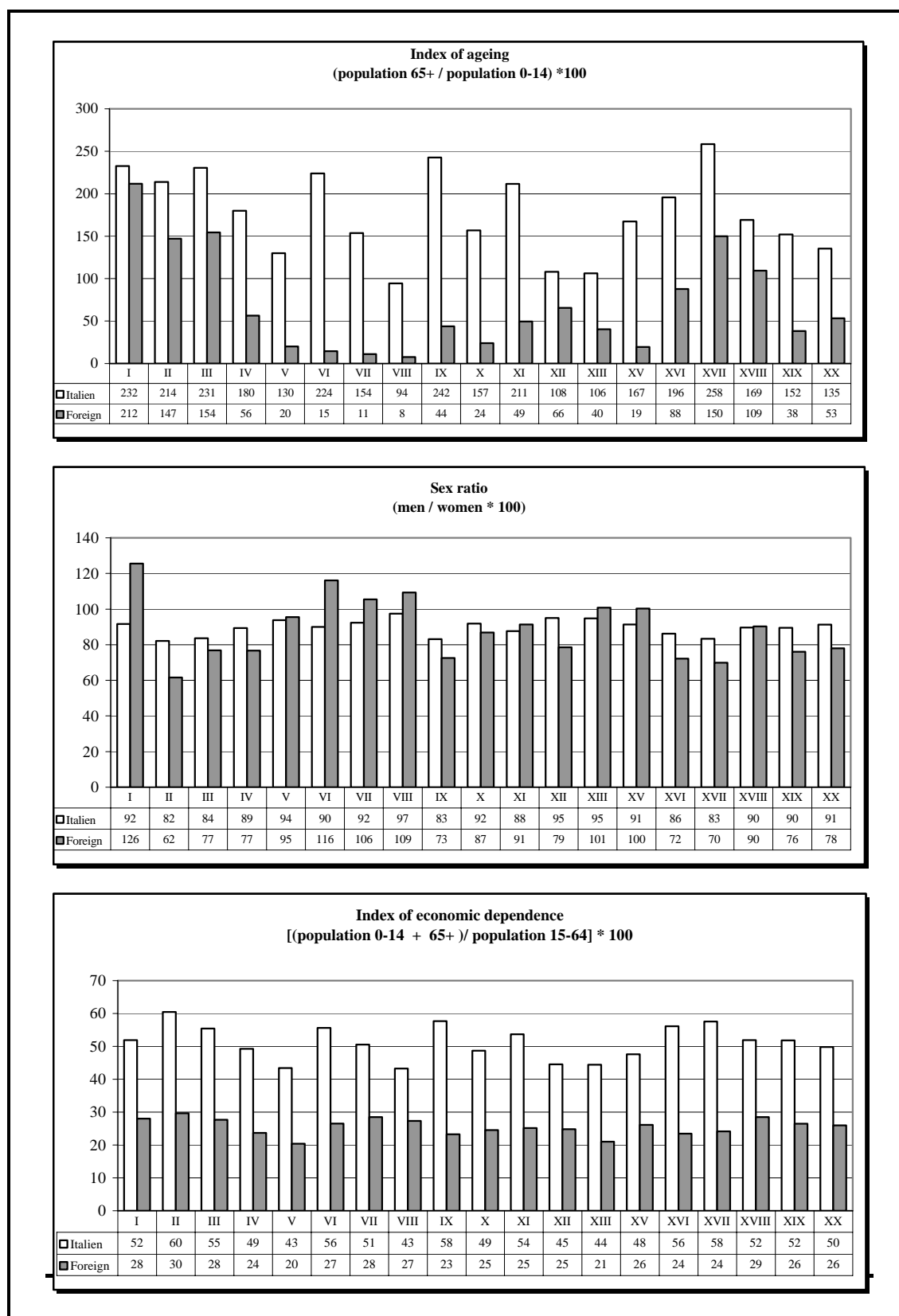


Figure A2 Demographic indicators by citizenship, December 31st 2003
 (continue)

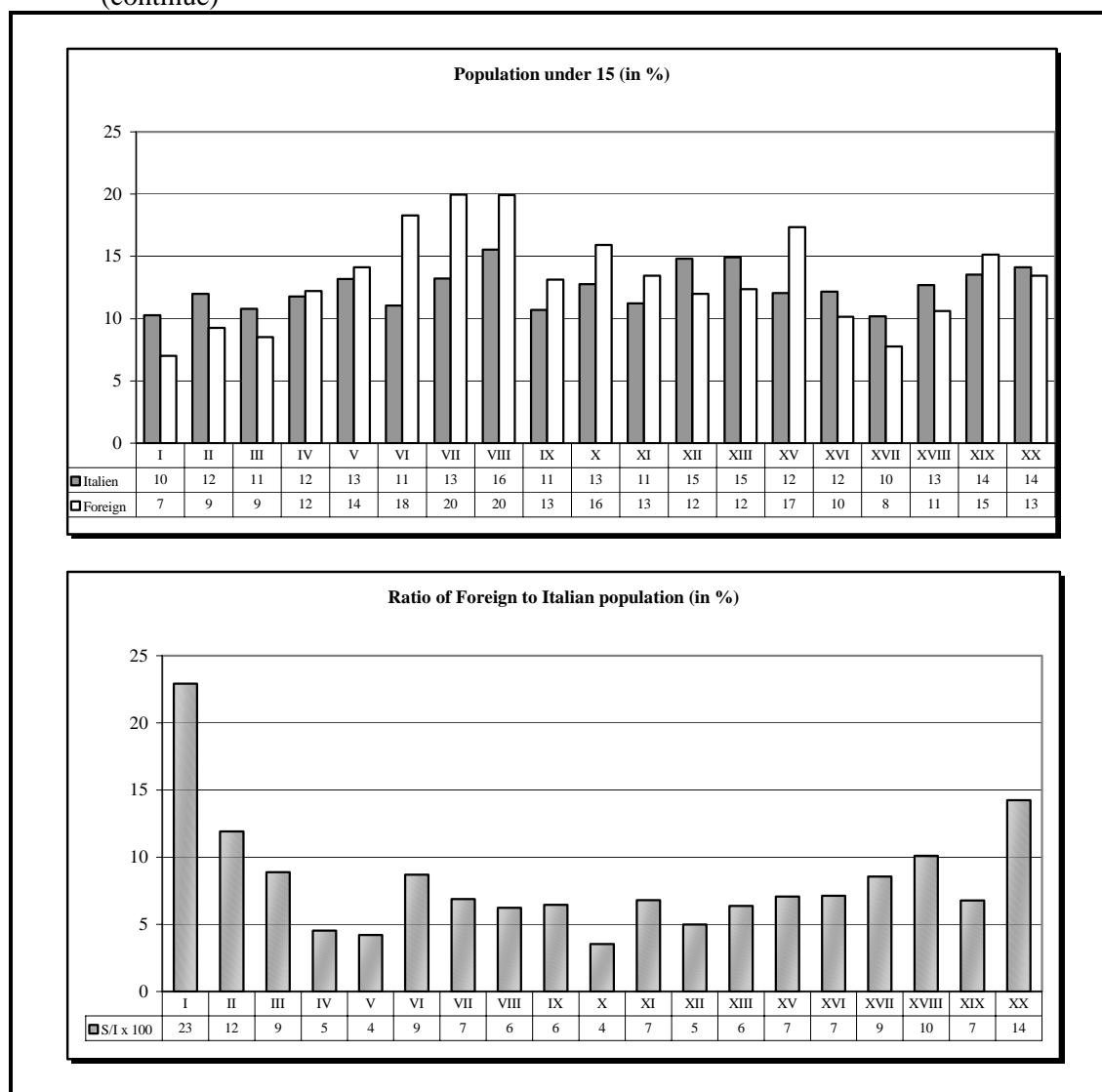


Figure A3 Variation in the number of foreign residents by gender and borough, 1997-2003

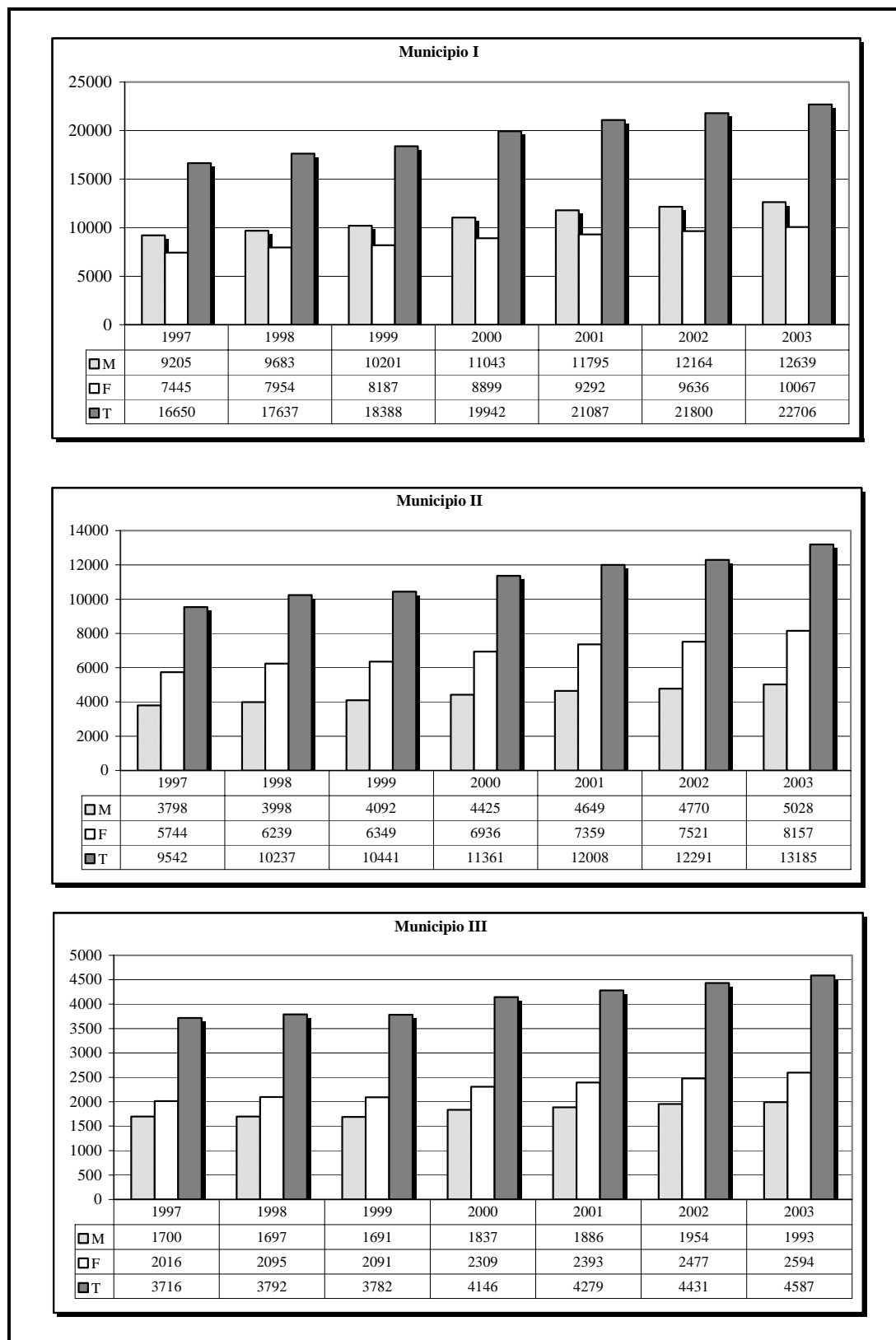


Figure A3 Variation in the number of foreign residents by gender and borough, 1997-2003
 (continue)

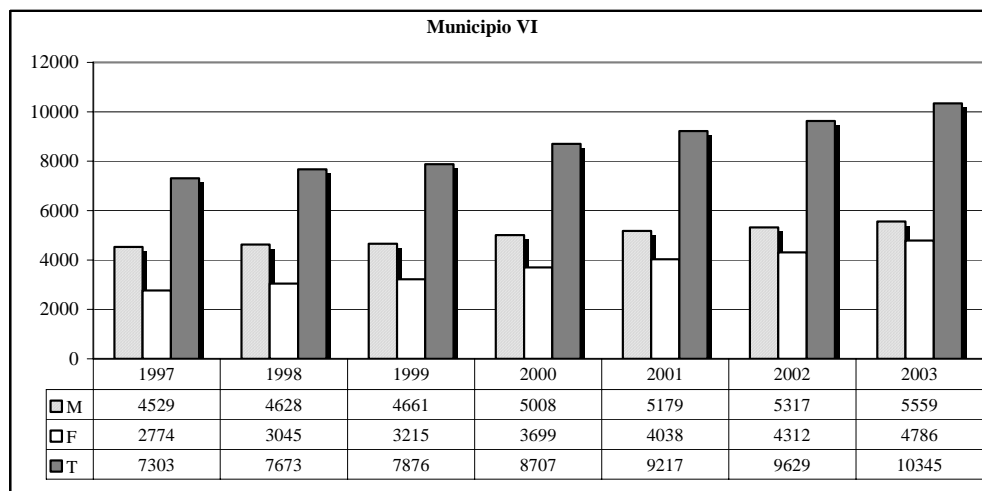
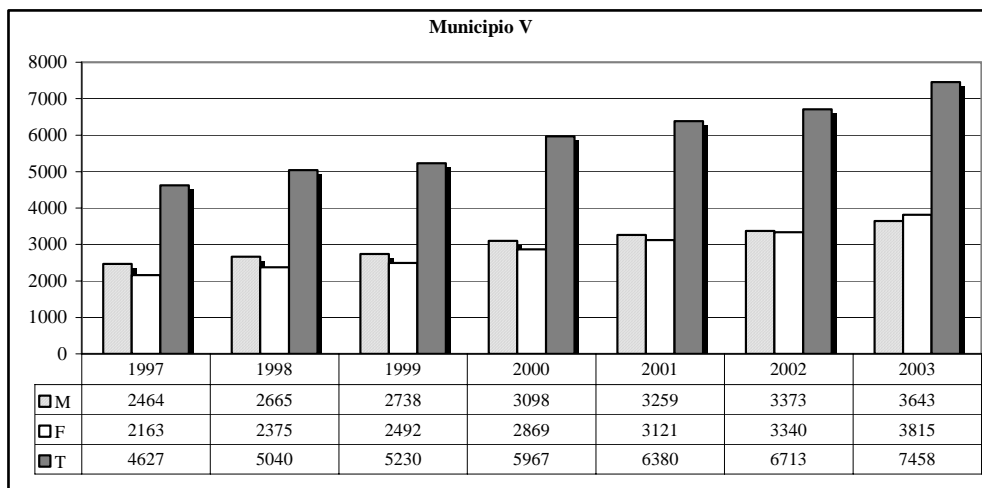
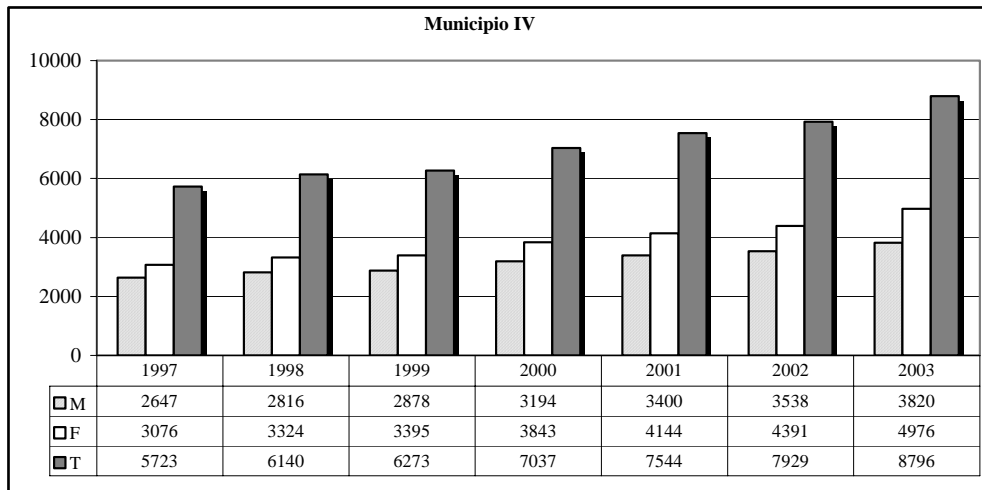


Figure A3 Variation in the number of foreign residents by gender and borough, 1997-2003
 (continue)

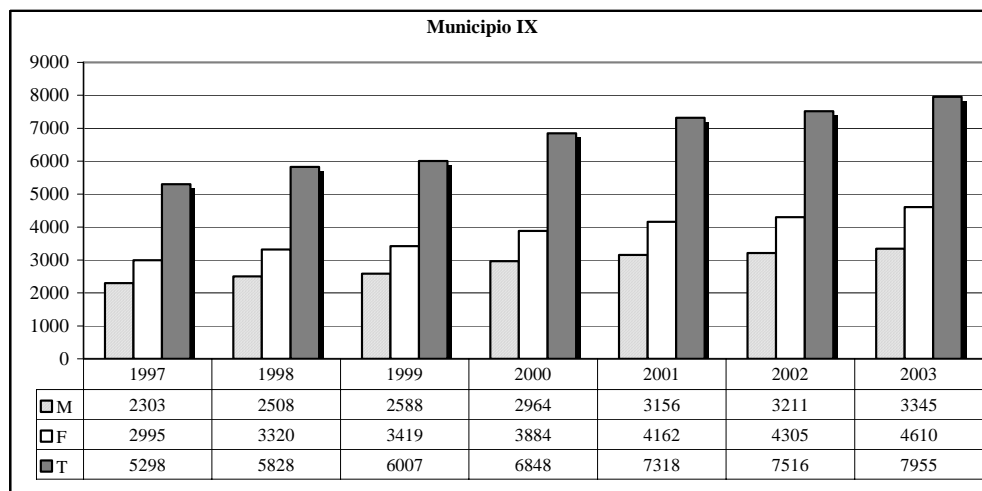
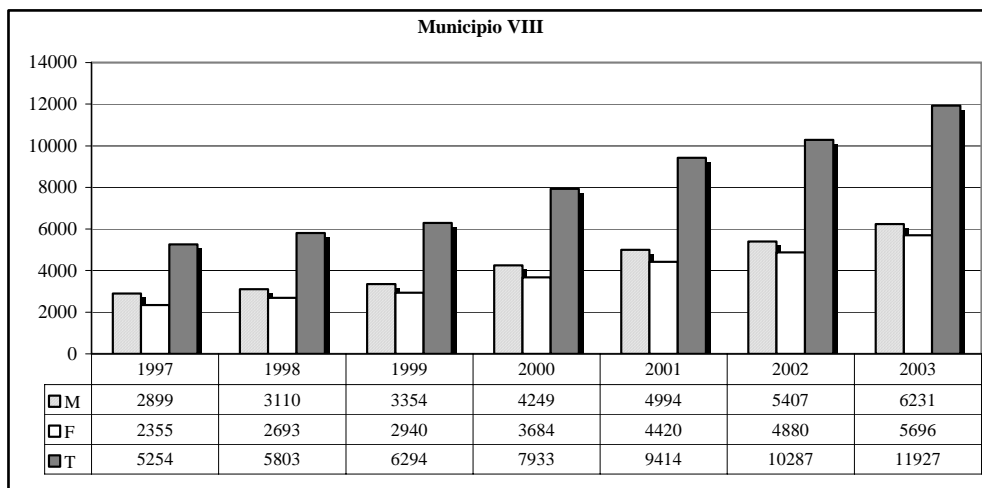
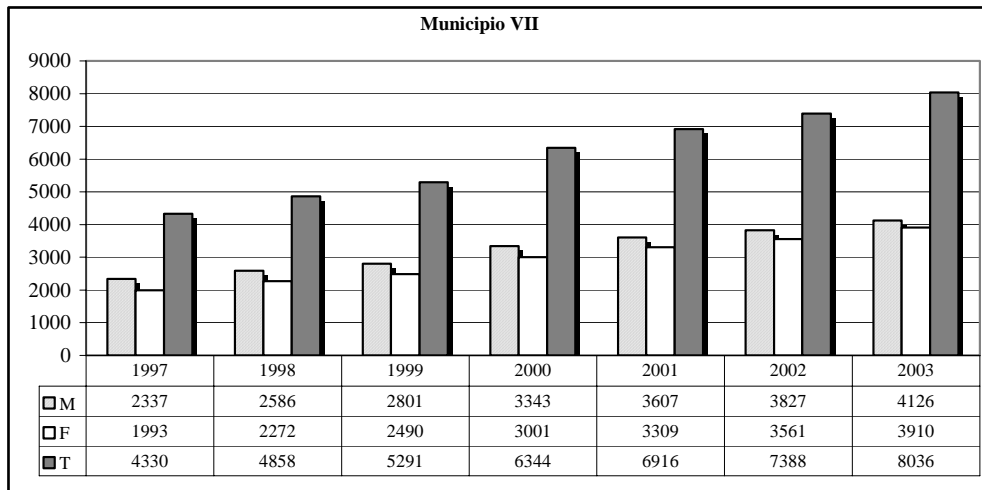


Figure A3 Variation in the number of foreign residents by gender and borough, 1997-2003
(continue)

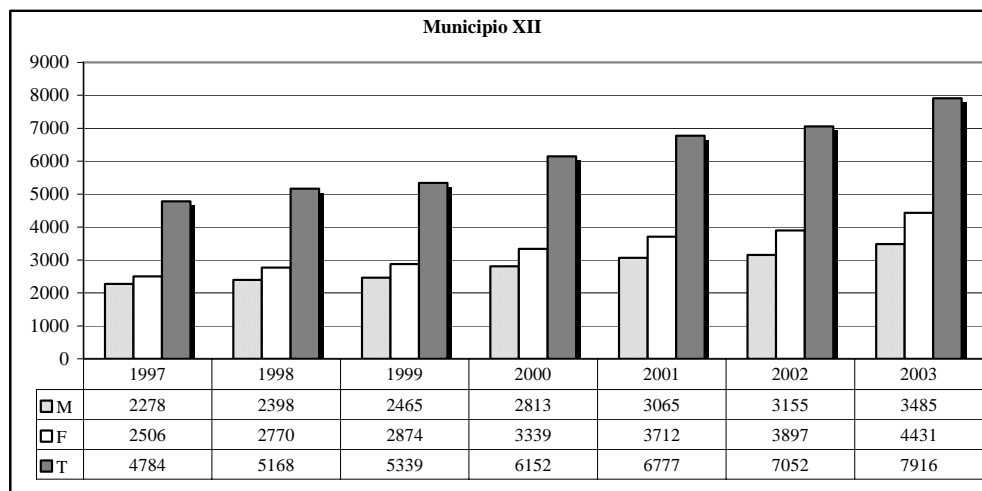
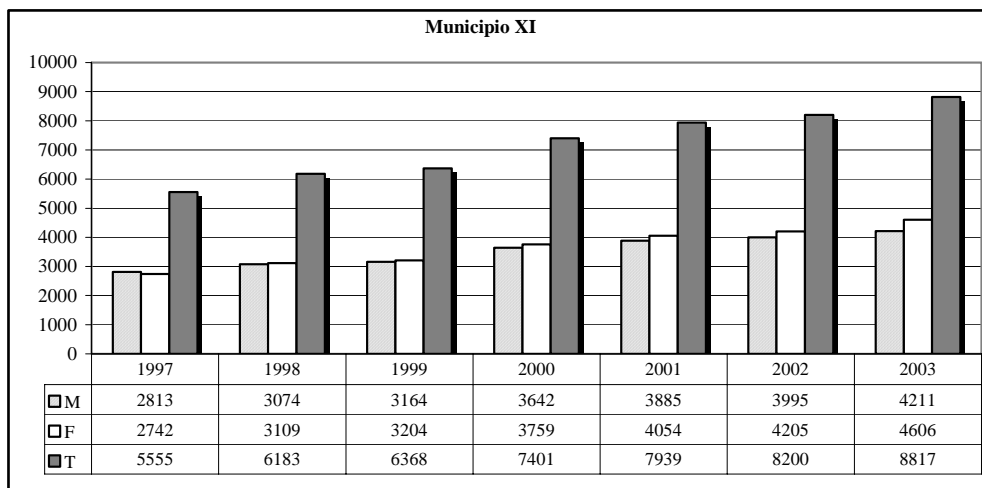
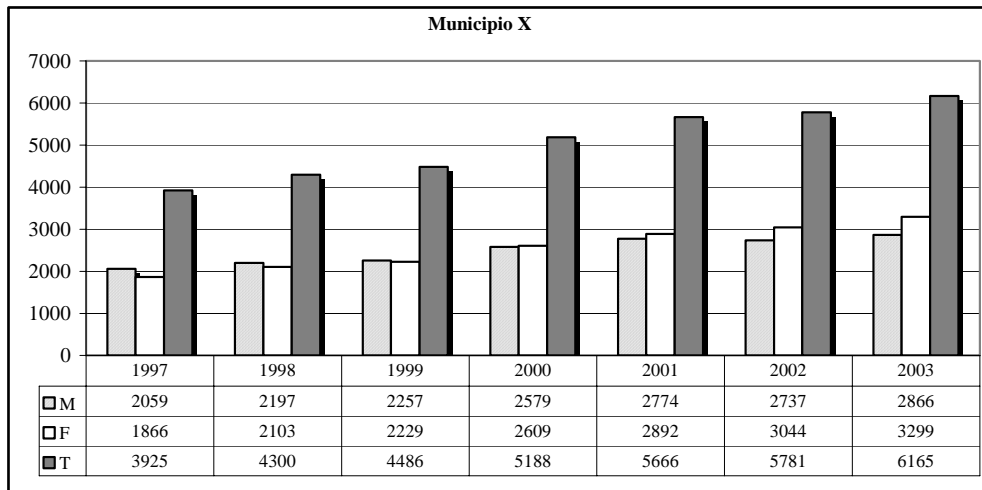


Figure A3 Variation in the number of foreign residents by gender and borough, 1997-2003
 (continue)

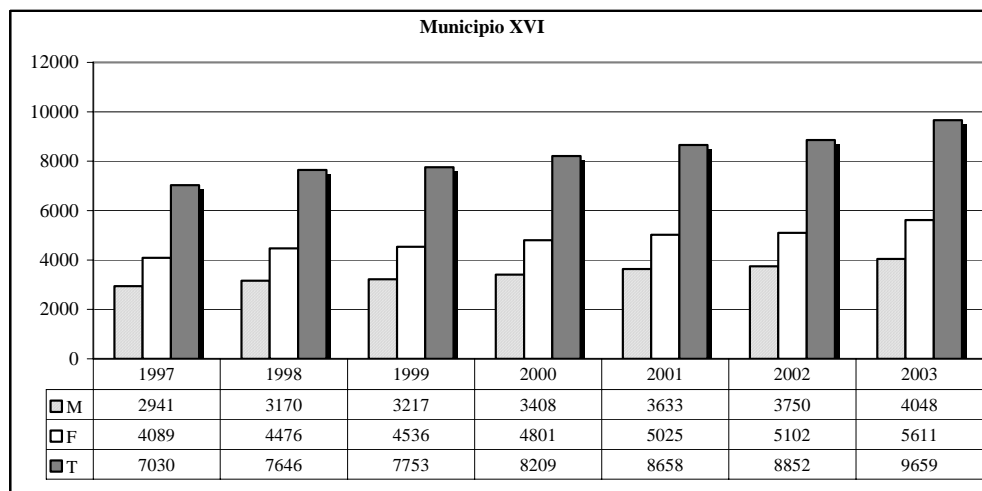
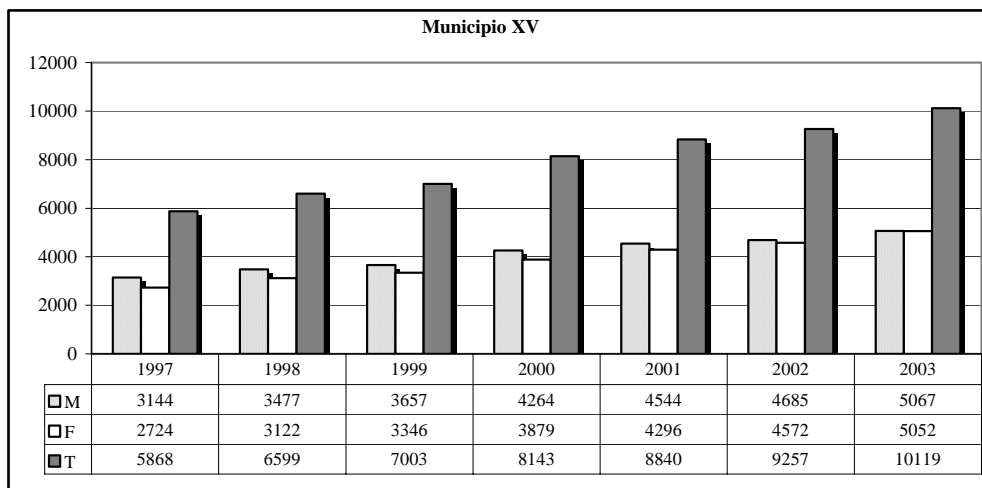
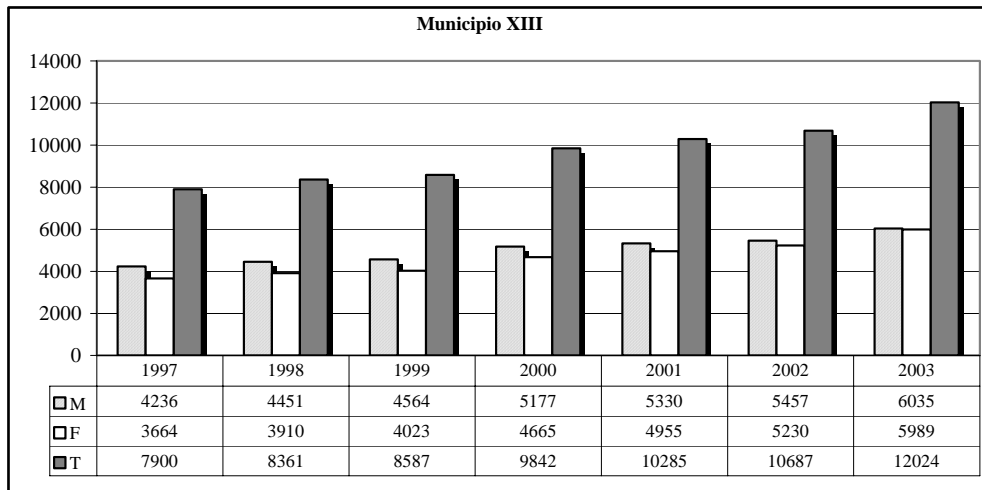


Figure A3 Variation in the number of foreign residents by gender and borough, 1997-2003
(continue)

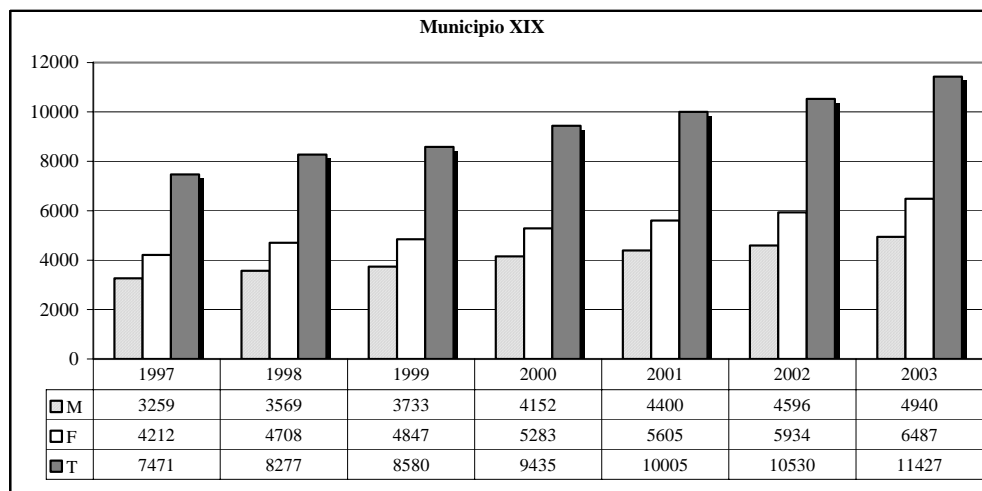
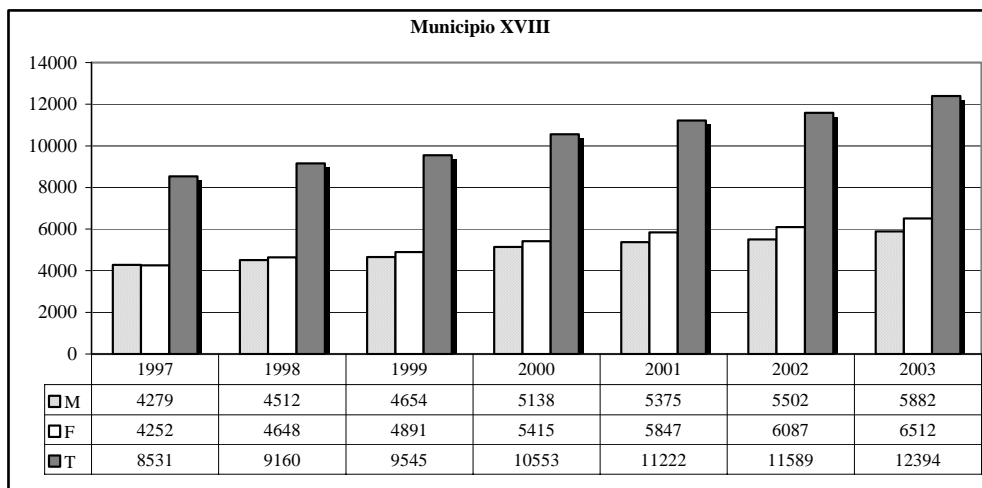
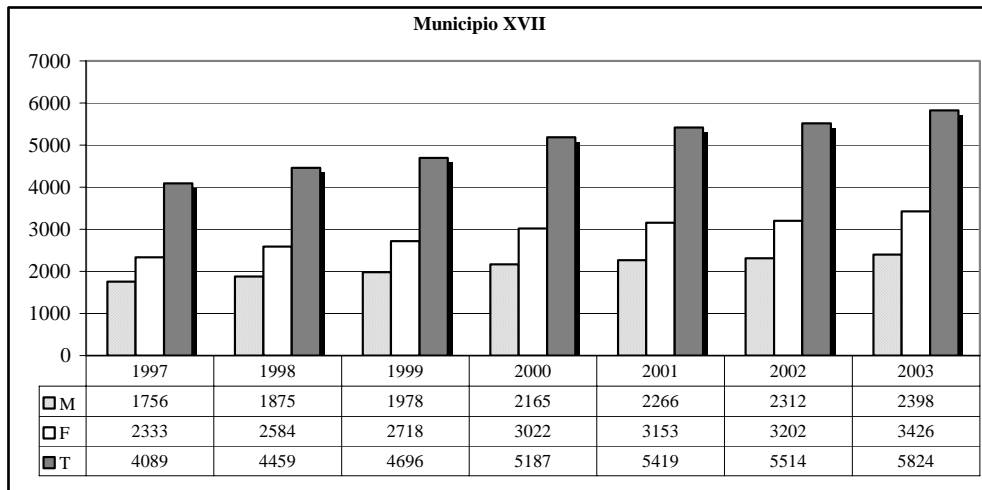


Figure A3 Variation in the number of foreign residents by gender and borough, 1997-2003
 (continue)

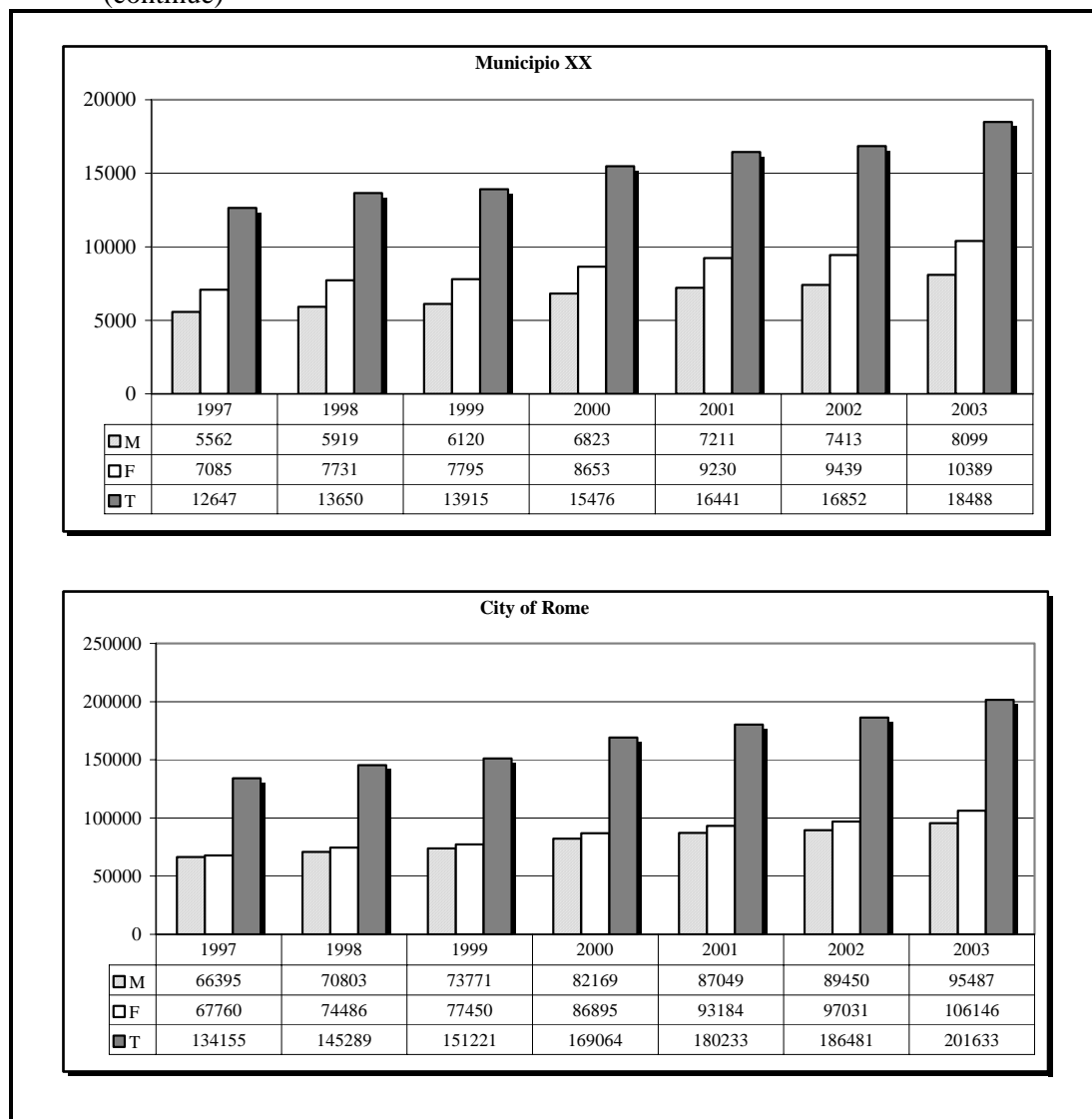


Figure A4 Foreign citizens by gender and borough, the ten most numerous nationalities, dicembre 31st 2003

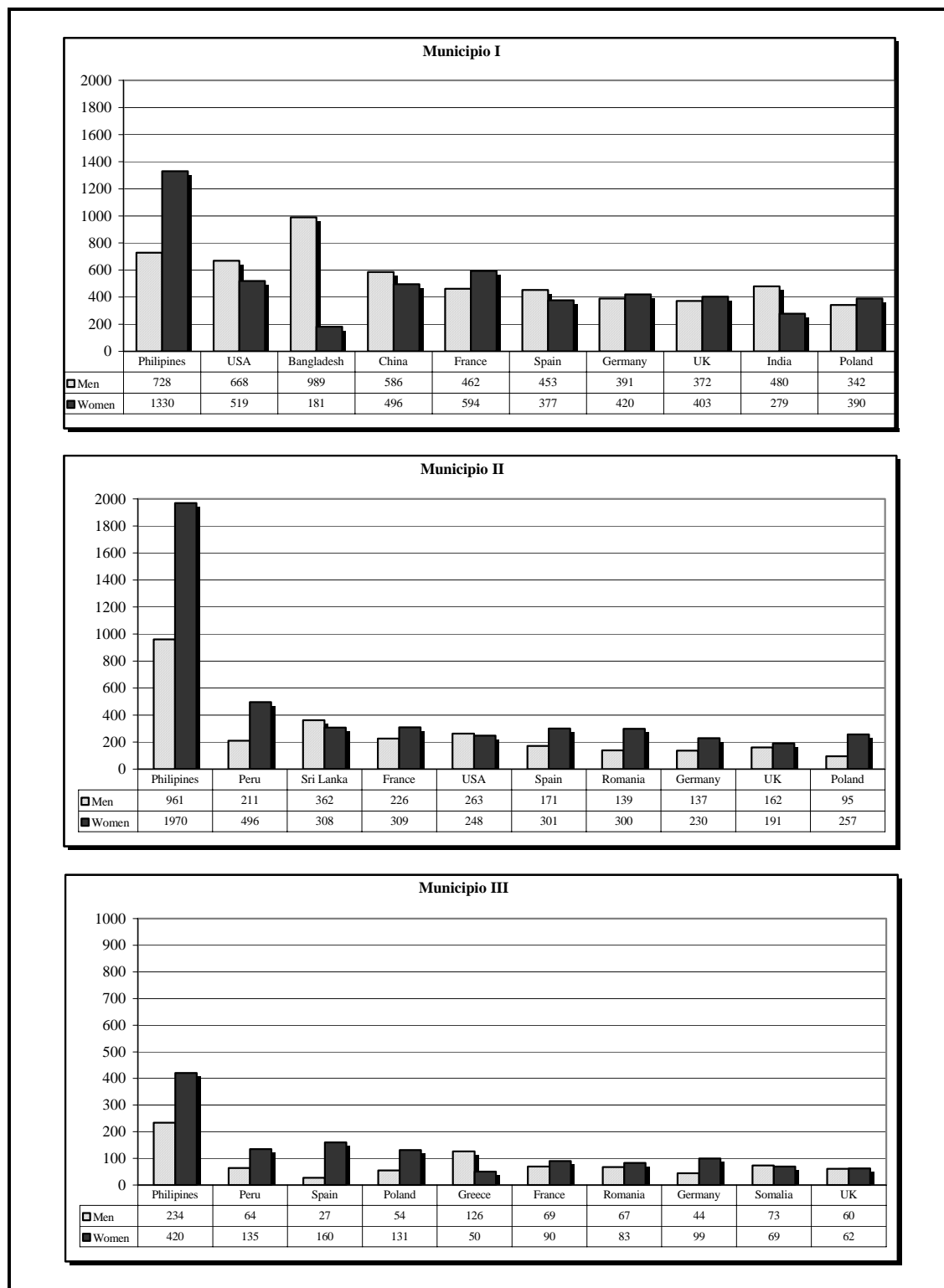


Figure A4 Foreign citizens by gender and borough, the ten most numerous nationalities, dicembre 31st 2003
 (continue)

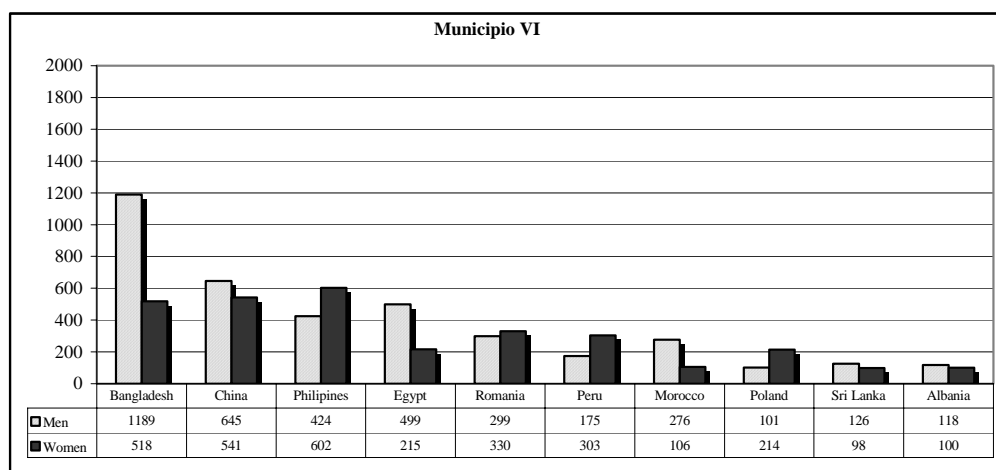
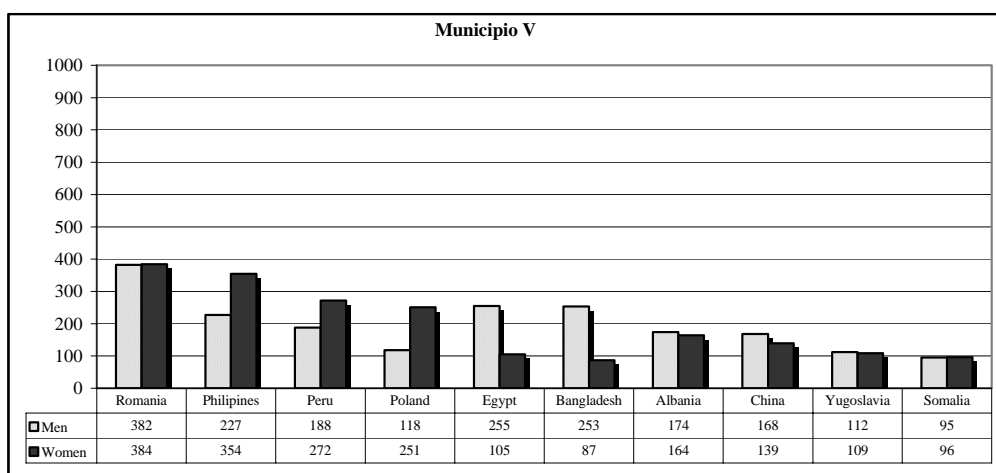
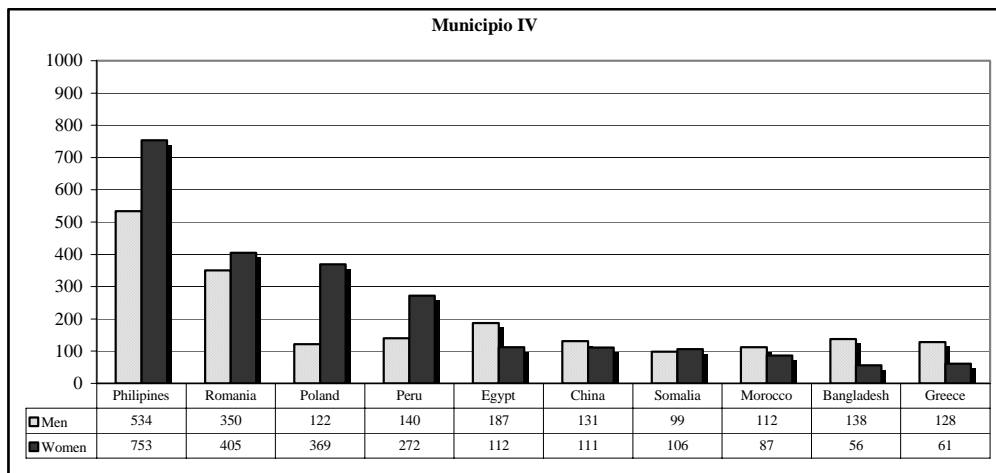


Figure A4 Foreign citizens by gender and borough, the ten most numerous nationalities, dicembre 31st 2003
 (continue)

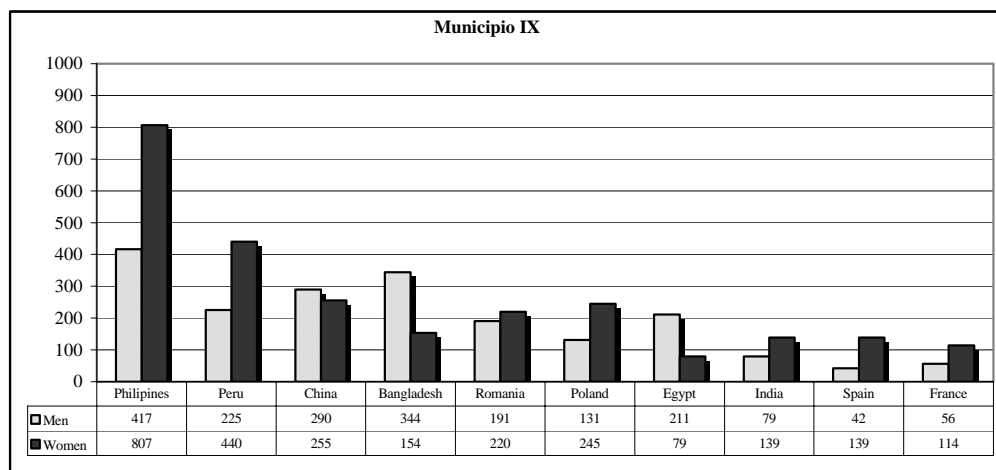
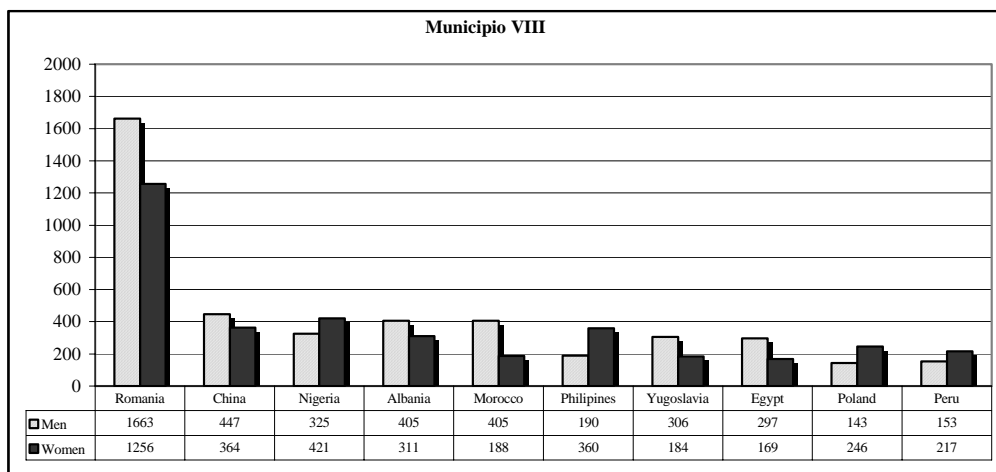
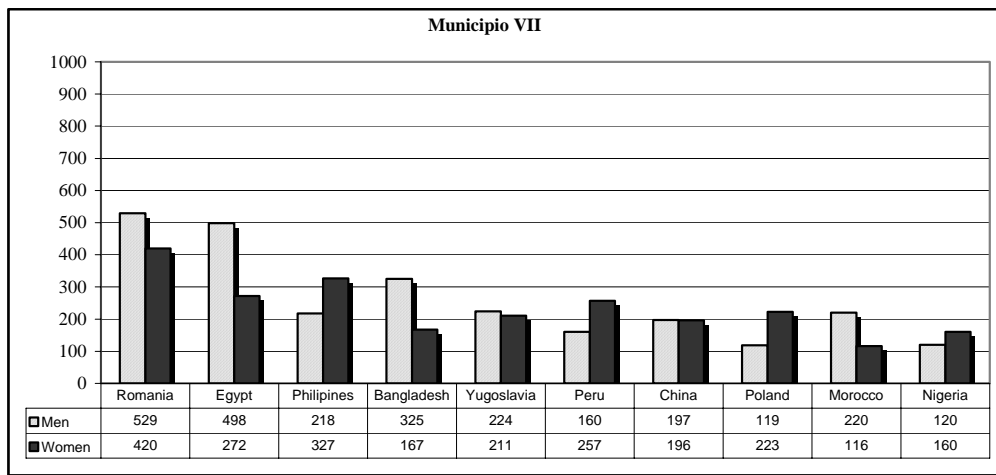


Figure A4 Foreign citizens by gender and borough, the ten most numerous nationalities, dicembre 31st 2003
 (continue)

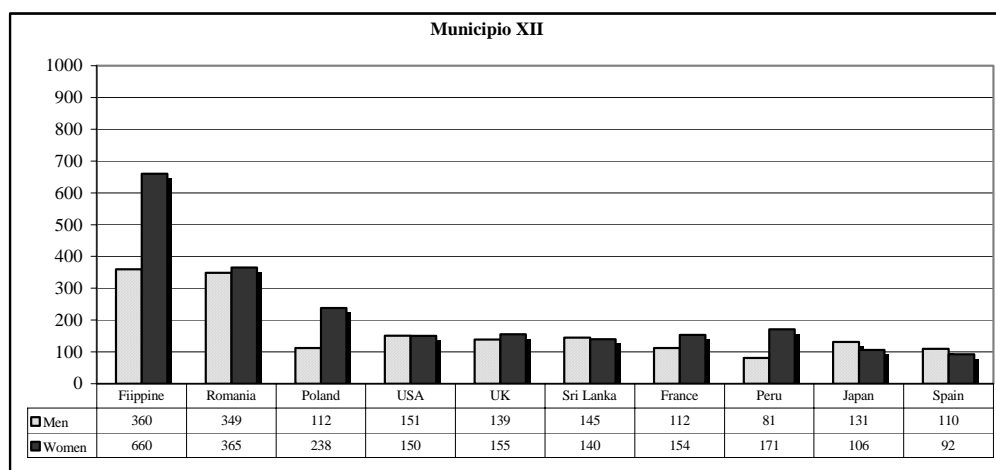
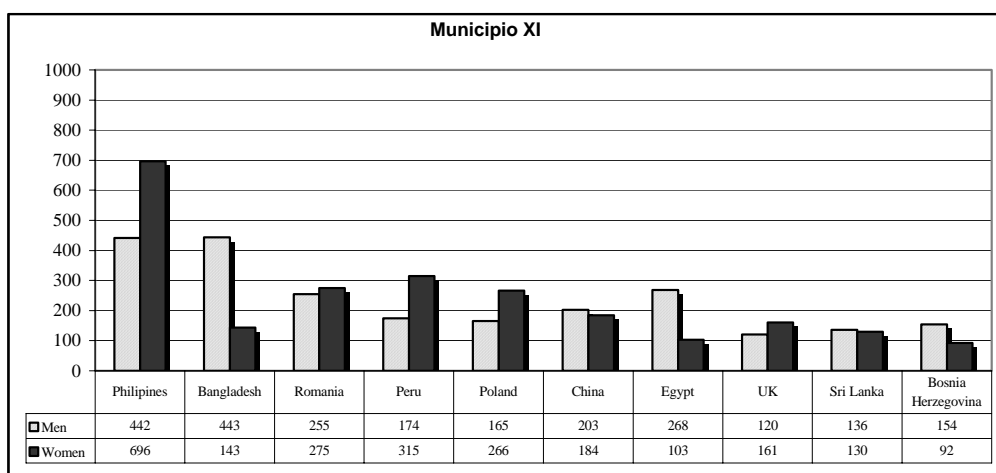
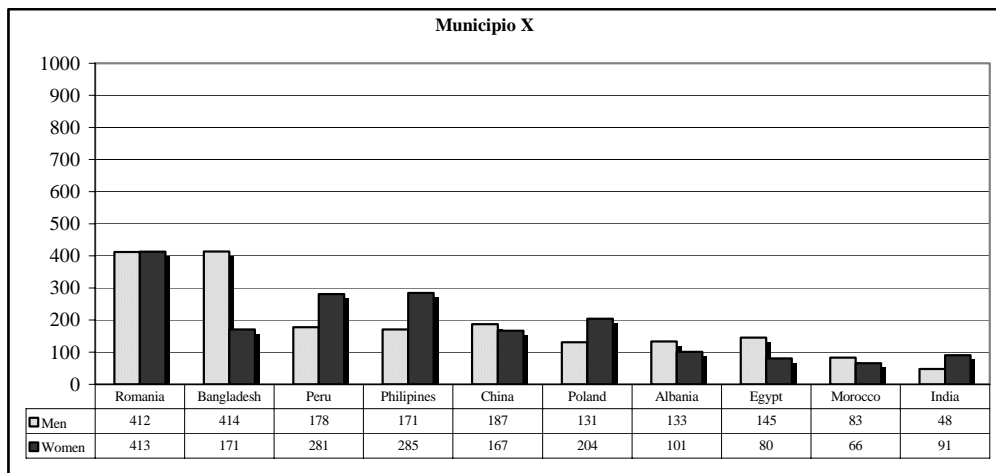


Figure A4 Foreign citizens by gender and borough, the ten most numerous nationalities, dicembre 31st 2003
 (continue)

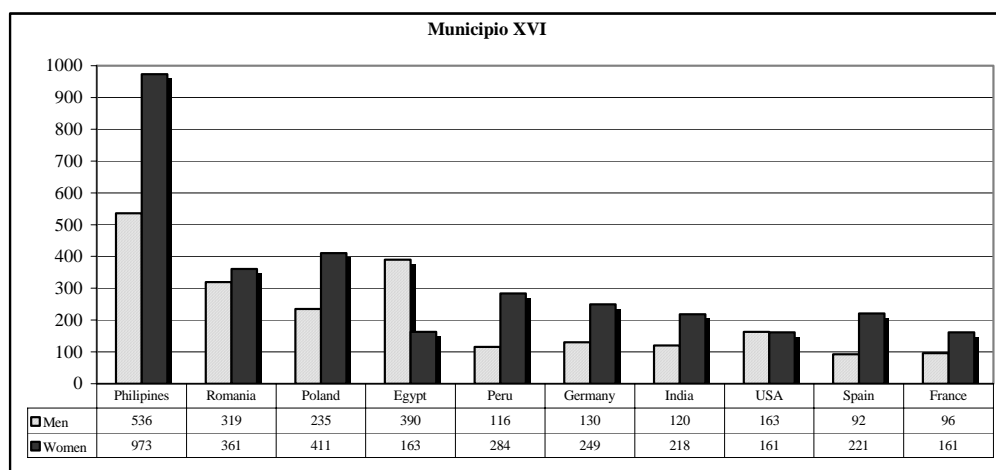
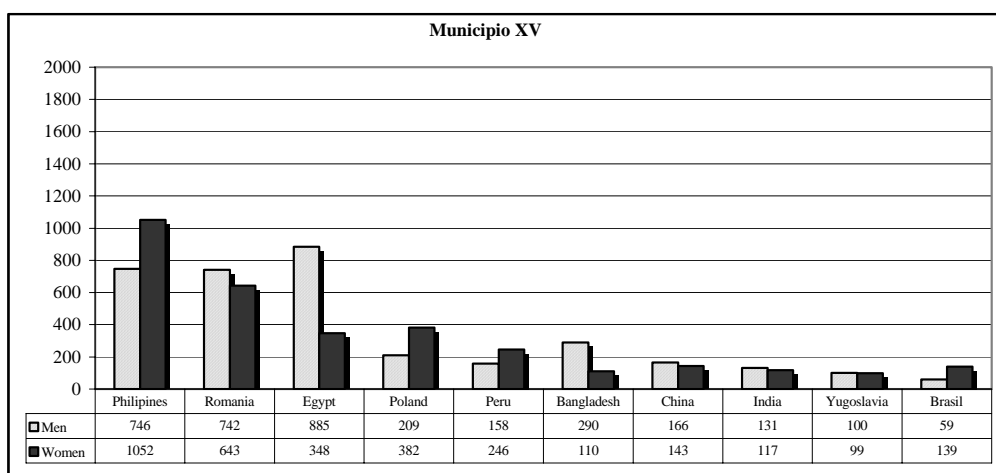
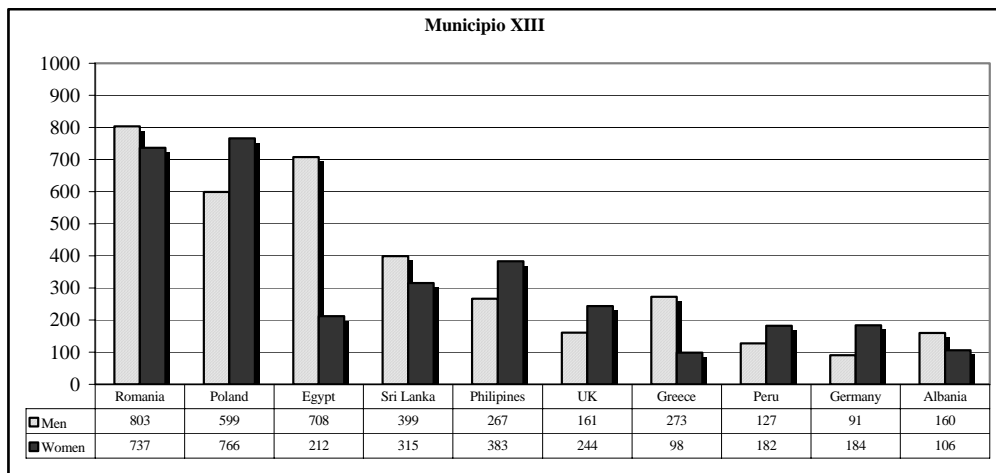


Figure A4 Foreign citizens by gender and borough, the ten most numerous nationalities, dicembre 31st 2003
 (continue)

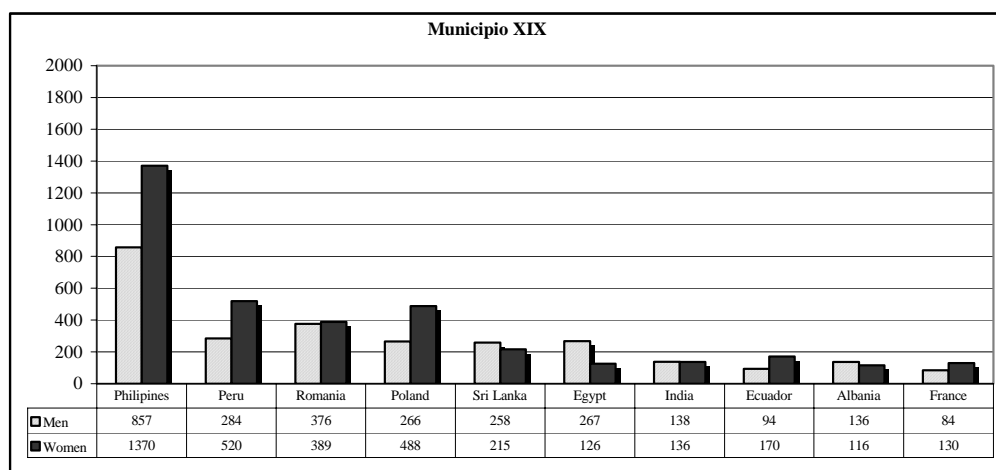
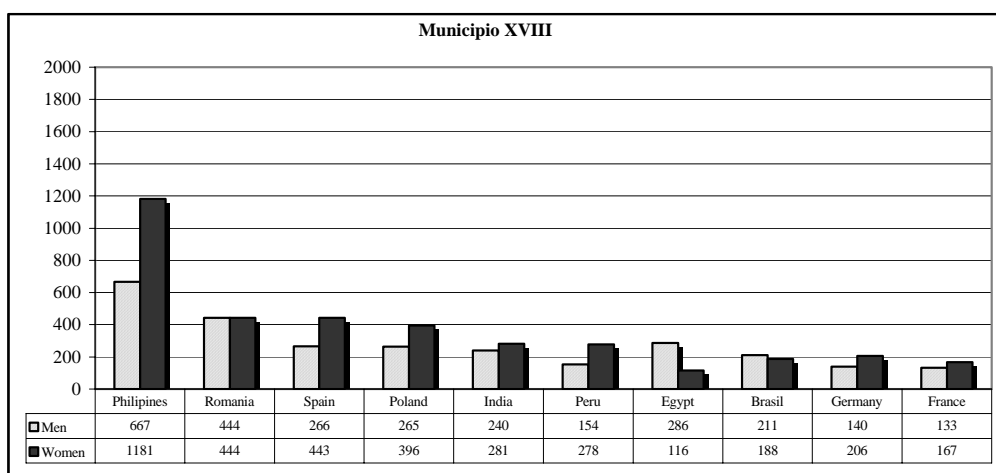
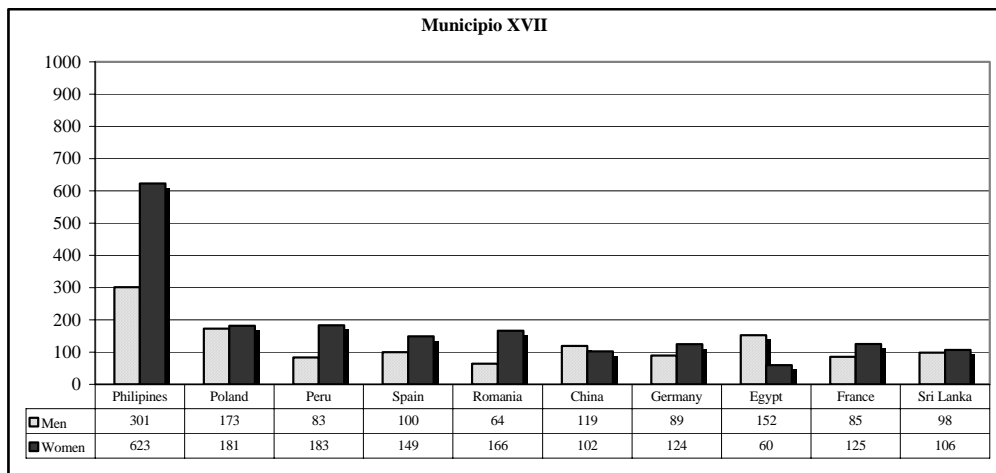


Figure A4 Foreign citizens by gender and borough, the ten most numerous nationalities, dicembre 31st 2003
 (continue)

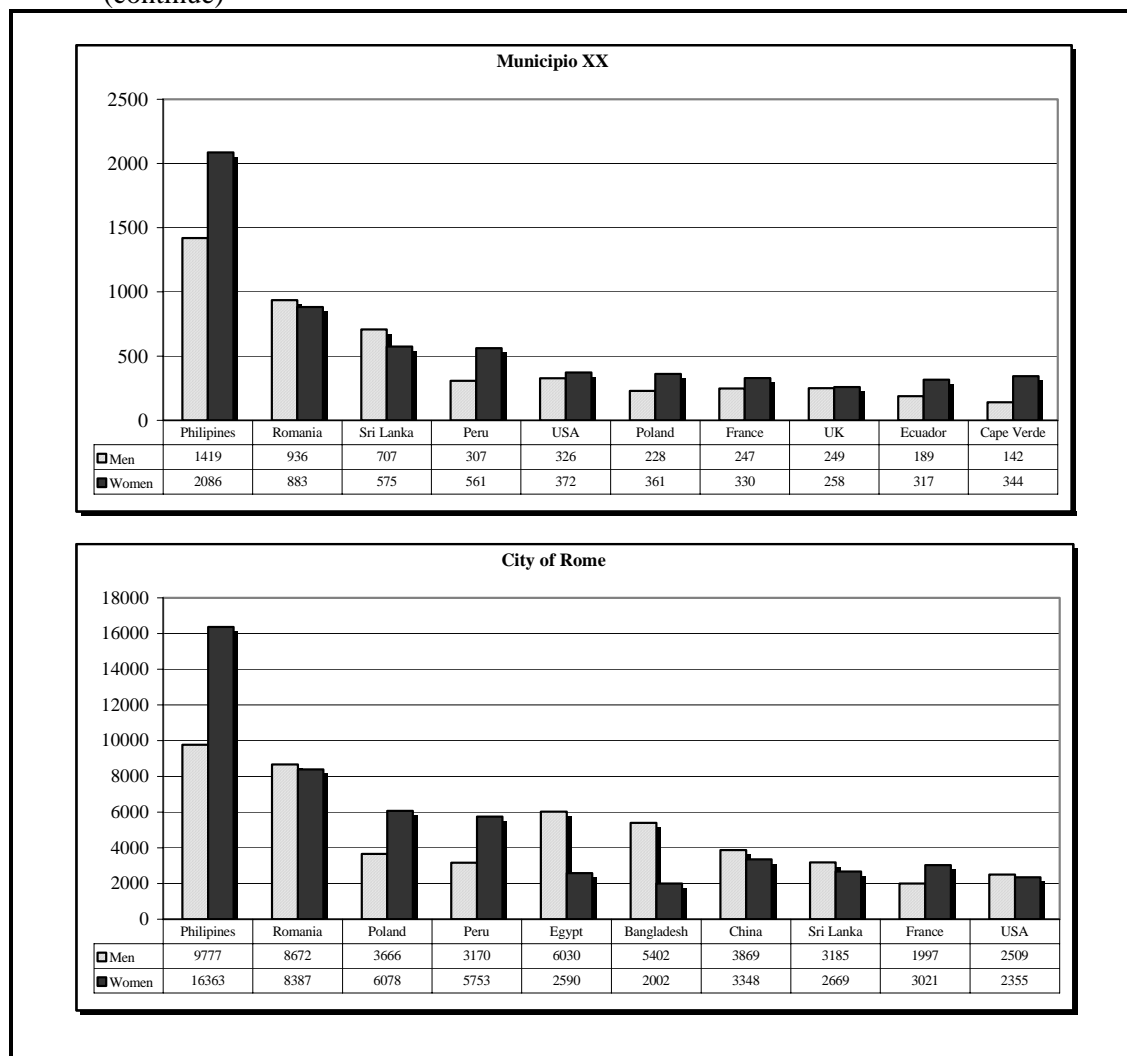


Figure A5 Incidence of foreign citizens by borough, December 31st 2003

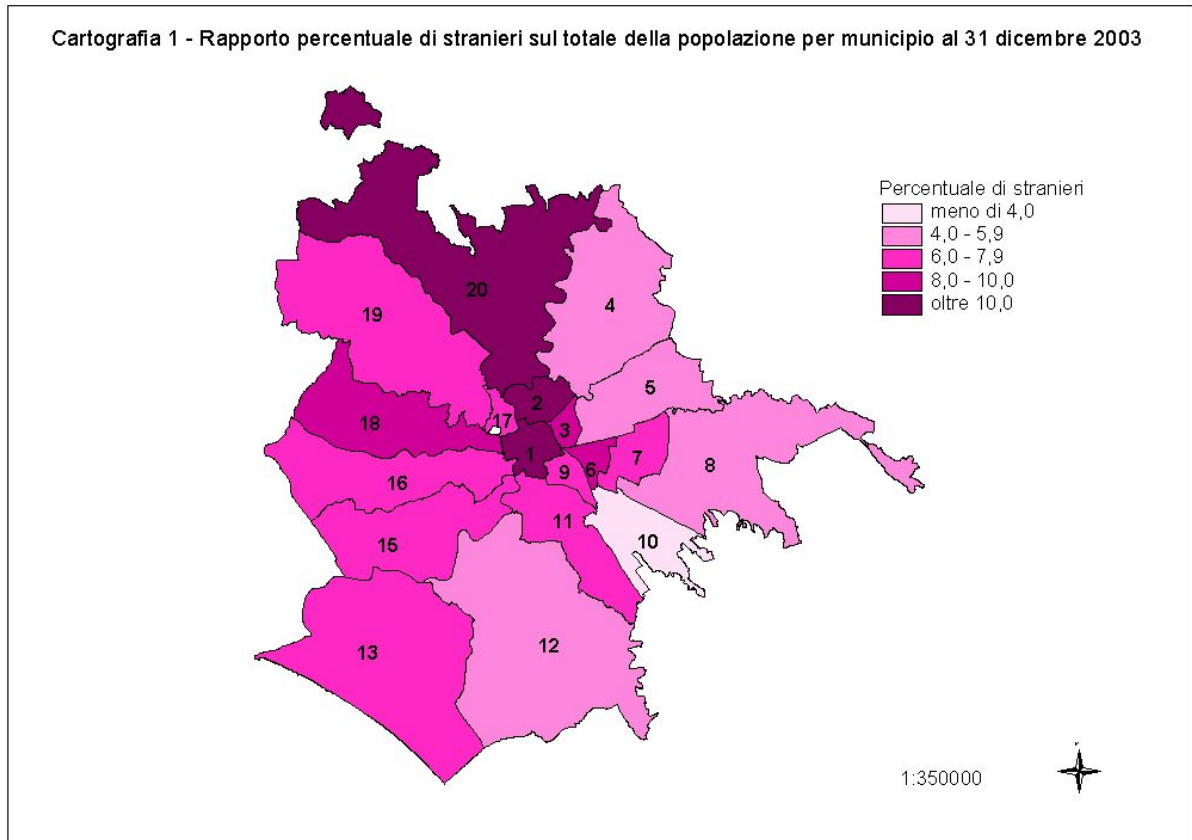


Figure A6 Variation in the number of foreign citizens, 1977 to 2003 (in %)

